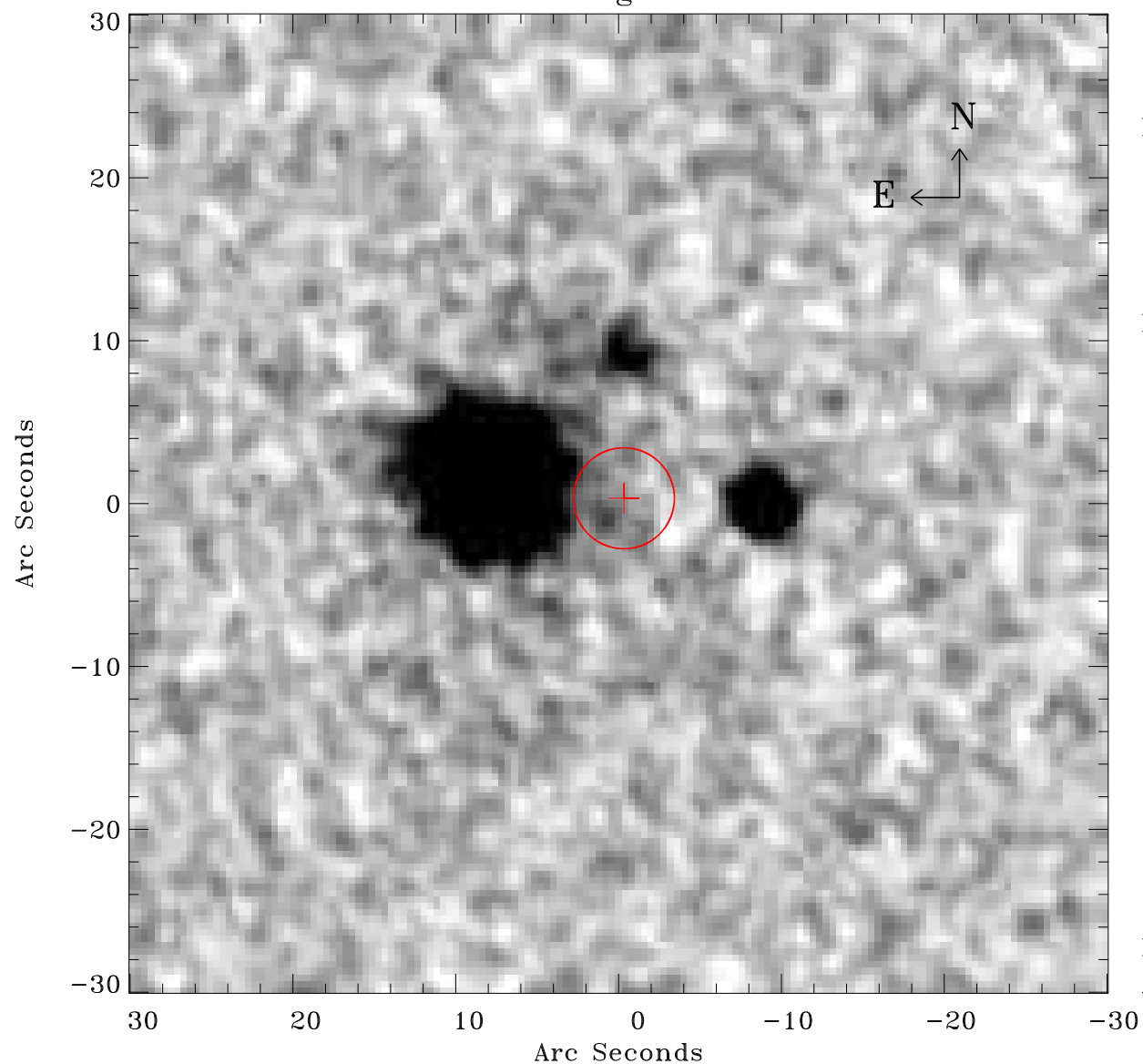


EPIC source finding chart ACDS V10.0



Principal Investigator :

Dr Bernd Aschenbach

XMM target name :

ESO 113- G 010

OBS ID : 103861601

Source number : 11

X-ray coordinates :

α : 01 05 22.42

δ : -58 21 11.3

Center coordinates :

α : 01 05 22.41

δ : -58 21 11.2

Plate reference :

Origin : CDS HIPs Network

Plate : MAMA srcj

Pixel : 0.40 "/pix

Error circle :

R_{90} (") : 3.1

XMM SSC

Apr 29 14:59:40 2019