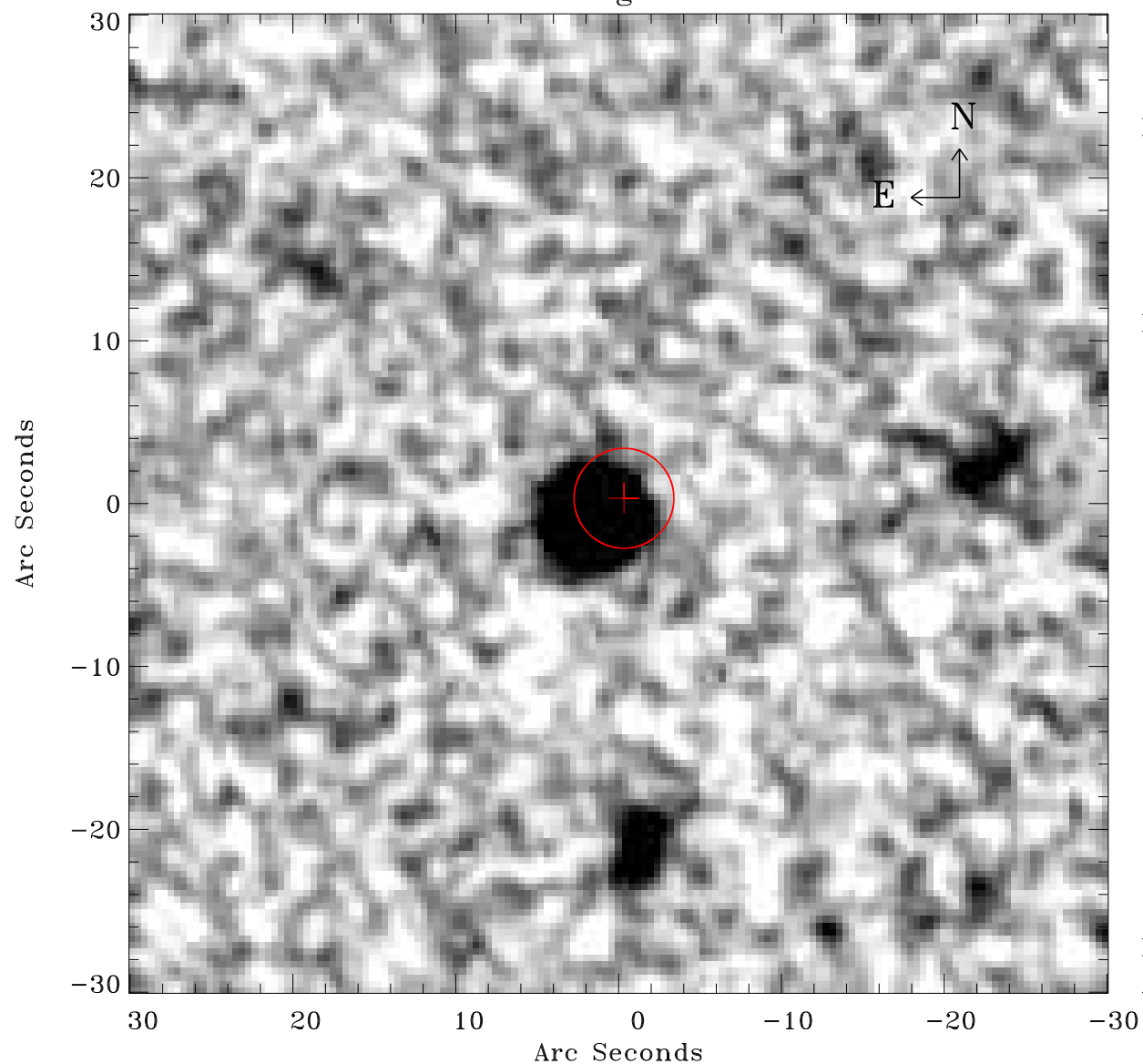


# EPIC source finding chart ACDS V10.0



Principal Investigator :

Dr Bernd Aschenbach

XMM target name :

ESO 113- G 010

OBS ID : 103861601

Source number : 12

X-ray coordinates :

$\alpha$  : 01 04 40.92

$\delta$  : -58 31 44.5

Center coordinates :

$\alpha$  : 01 04 40.91

$\delta$  : -58 31 44.4

Plate reference :

Origin : CDS HIPs Network

Plate : MAMA srcj

Pixel : 0.40 "/pix

Error circle :

$R_{90}$  (") : 3.0

XMM SSC

Apr 29 14:54:09 2019