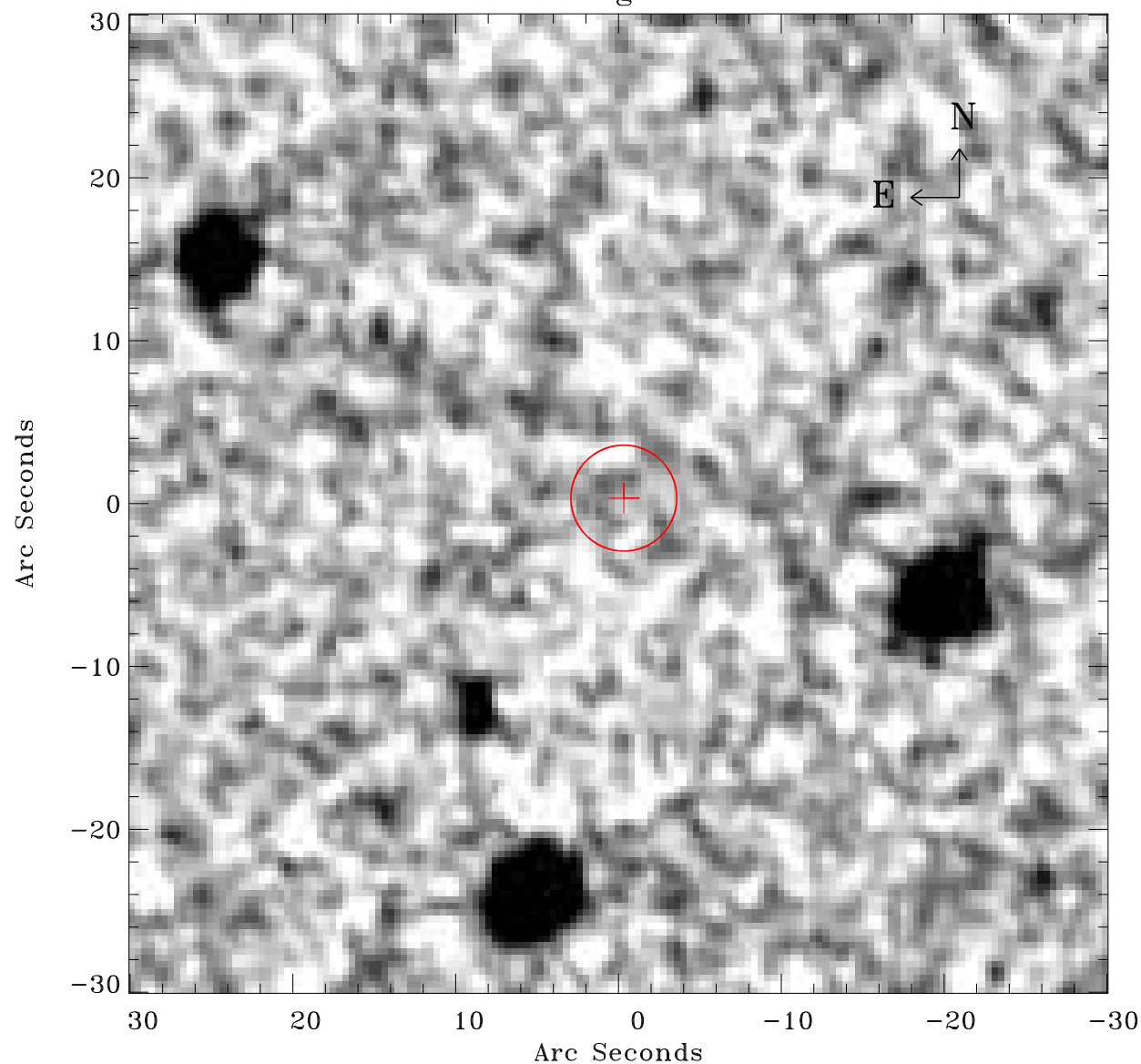


# EPIC source finding chart ACDS V10.0



Principal Investigator :

Dr Bernd Aschenbach

XMM target name :

ESO 113- G 010

OBS ID : 103861601

Source number : 23

X-ray coordinates :

$\alpha$  : 01 06 08.09

$\delta$  : -58 20 25.6

Center coordinates :

$\alpha$  : 01 06 08.08

$\delta$  : -58 20 25.6

Plate reference :

Origin : CDS HIPs Network

Plate : MAMA srcj

Pixel : 0.40 "/pix

Error circle :

$R_{90}$  (") : 3.2

XMM SSC

Apr 29 15:03:01 2019