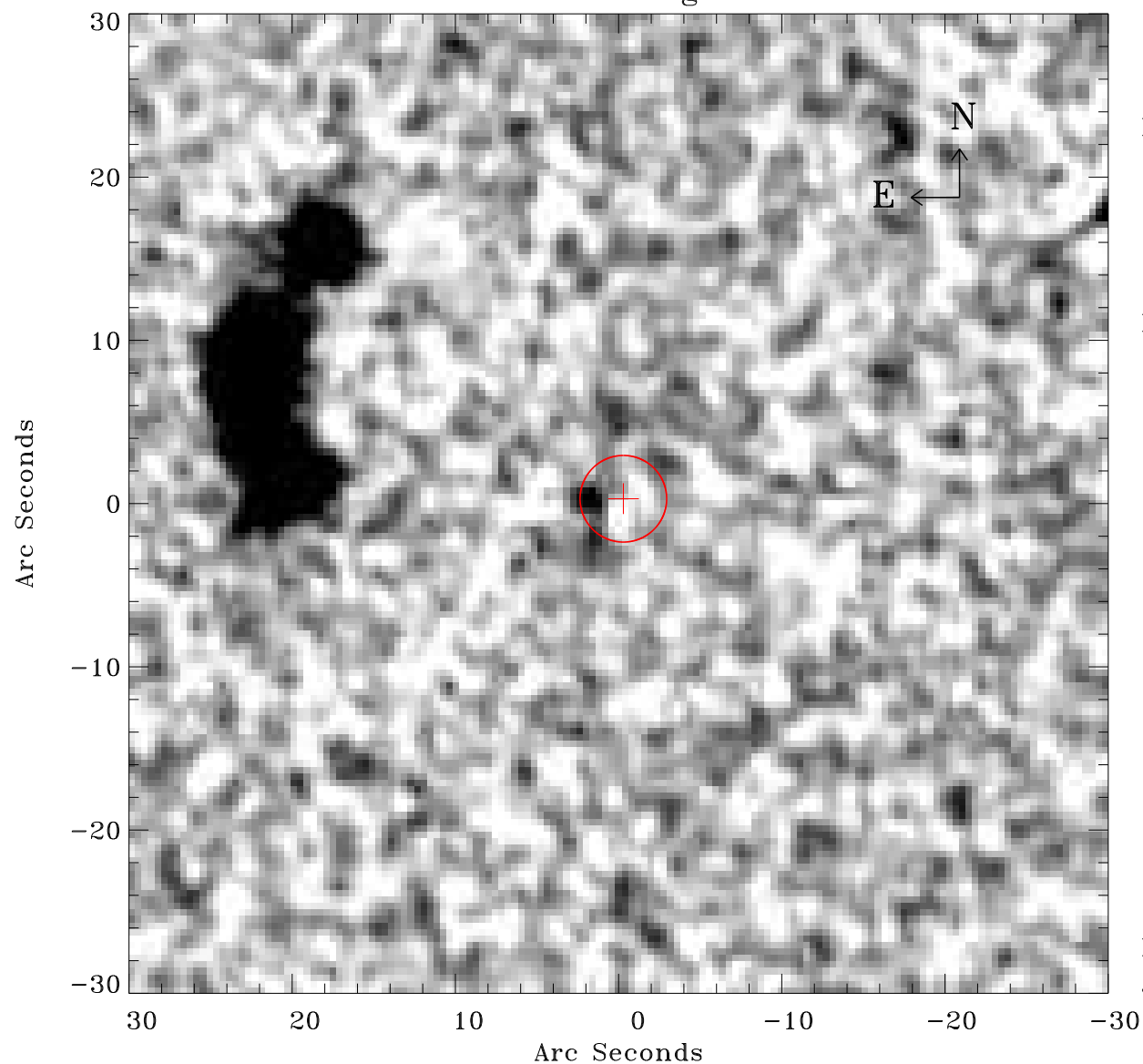


EPIC source finding chart V10



Principal Investigator :

Dr Bernd Aschenbach

XMM target name :

ESO 113- G 010

OBS ID : 103861601

Source number : 11

X-ray coordinates :

α : 01 05 53.19

δ : -58 32 40.1

Center coordinates :

α : 01 05 53.18

δ : -58 32 40.0

Plate reference :

Origin : CDS HIPs Network

Plate : MAMA srcj

Pixel : 0.40 "/pix

Error circle :

R_{90} (") : 2.6

XMM SSC

Jan 16 00:51:25 2025