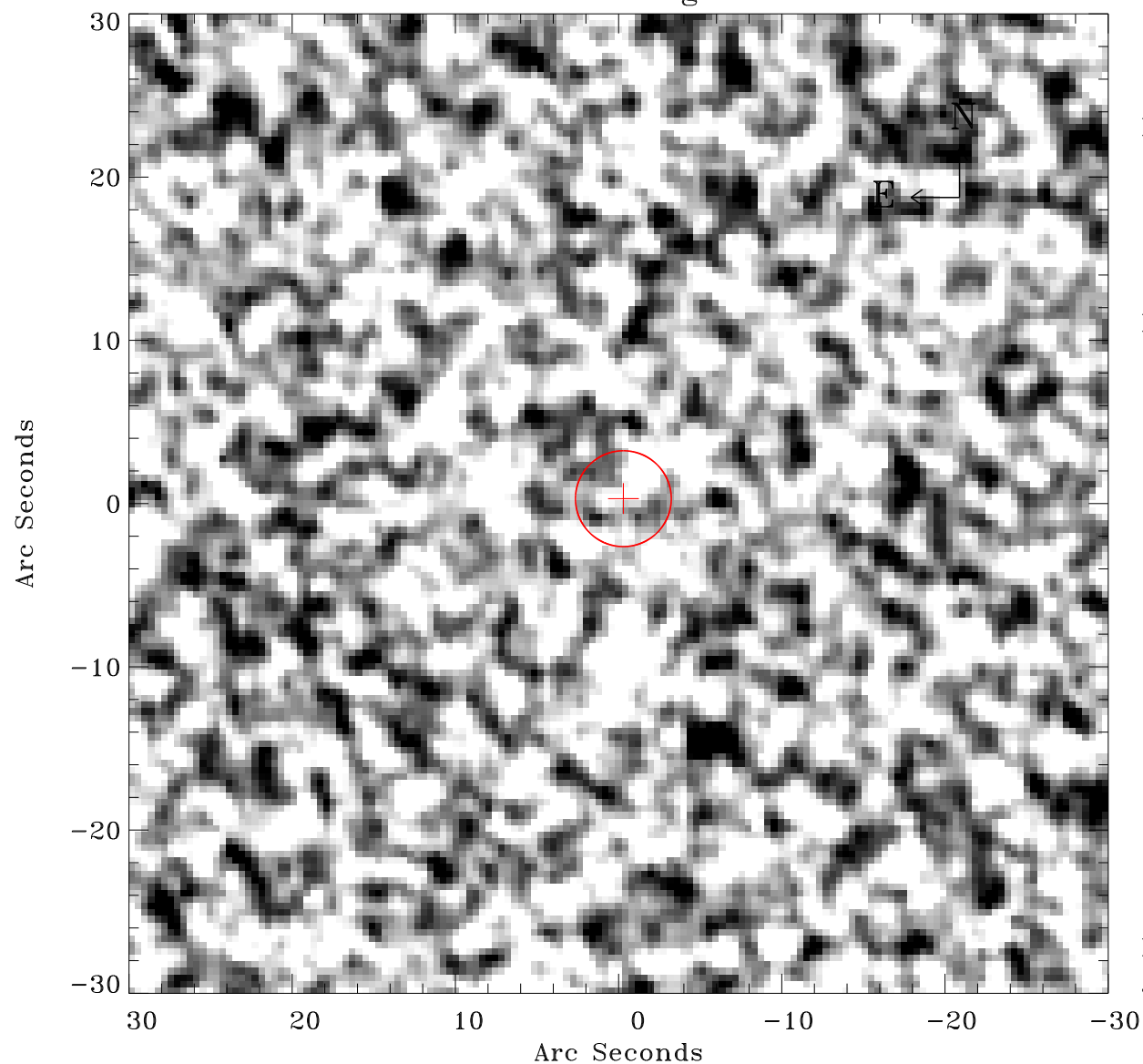


# EPIC source finding chart V10



Principal Investigator :

Dr Bernd Aschenbach

XMM target name :

ESO 113- G 010

OBS ID : 103861601

Source number : 29

X-ray coordinates :

$\alpha$  : 01 06 43.59

$\delta$  : -58 33 28.5

Center coordinates :

$\alpha$  : 01 06 43.58

$\delta$  : -58 33 28.4

Plate reference :

Origin : CDS HIPs Network

Plate : MAMA srcj

Pixel : 0.40 "/pix

Error circle :

$R_{90}$  (") : 2.9

XMM SSC

Jan 16 00:52:02 2025