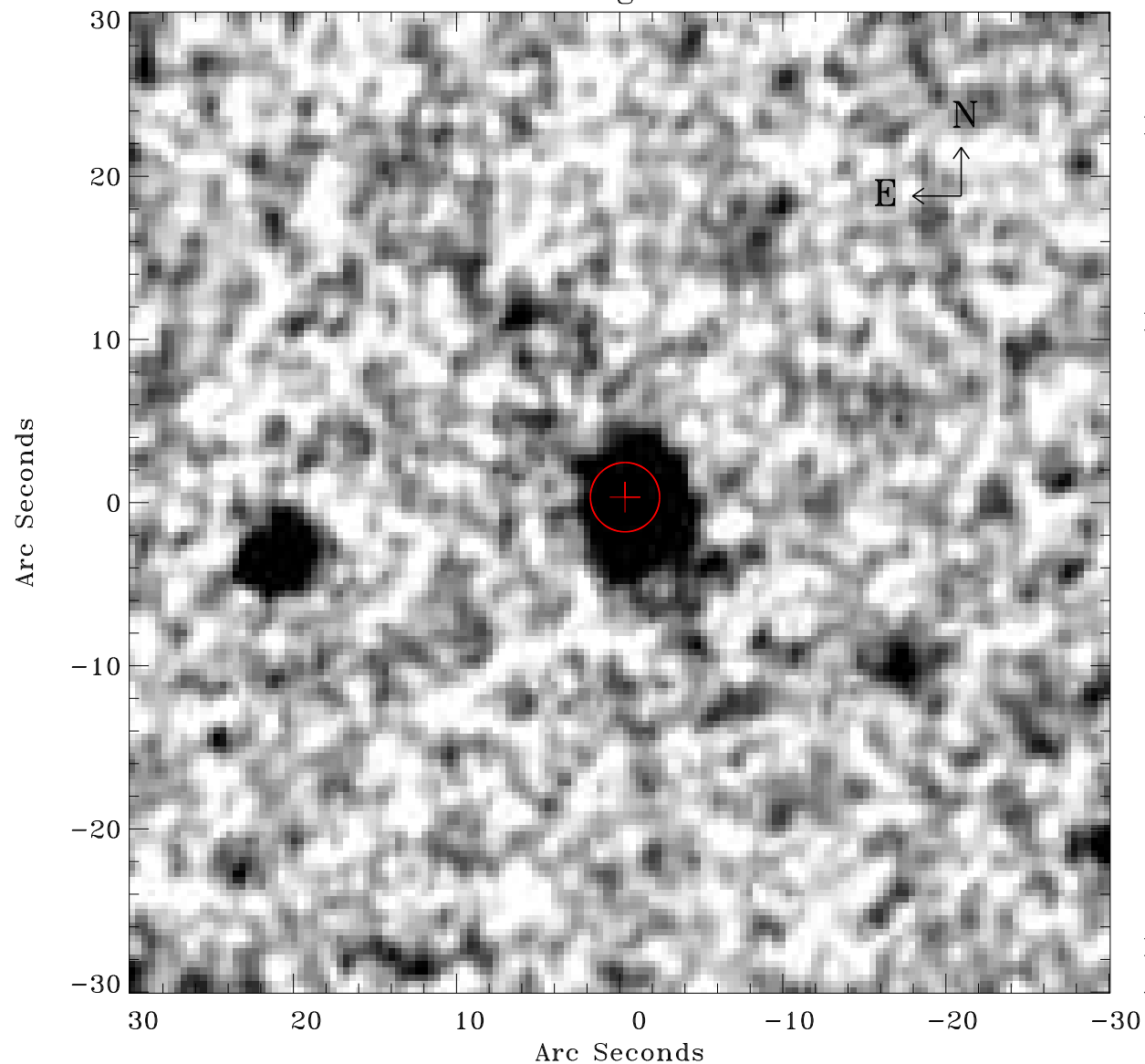


EPIC source finding chart ACDS V10.0



Principal Investigator :

Dr Bernd Aschenbach

XMM target name :

ESO 15- IG 011

OBS ID : 103861701

Source number : 2

X-ray coordinates :

α : 04 34 48.03

δ : -77 53 28.1

Center coordinates :

α : 04 34 48.01

δ : -77 53 28.0

Plate reference :

Origin : CDS HIPs Network

Plate : MAMA srcj

Pixel : 0.40 "/pix

Error circle :

R_{90} (") : 2.1

XMM SSC

Apr 22 03:49:42 2019