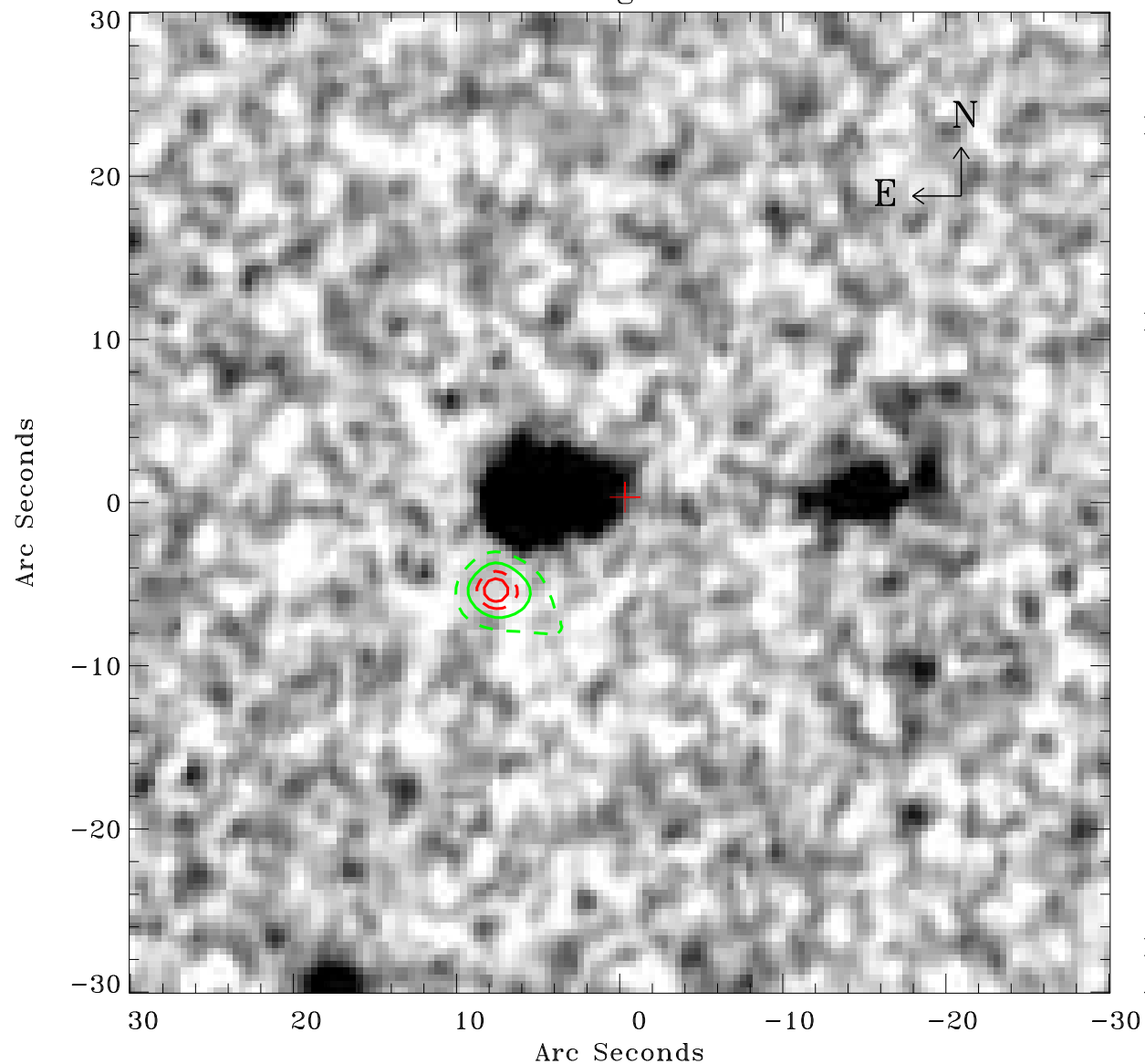


EPIC source finding chart ACDS V10.0



Principal Investigator :

Dr Bernd Aschenbach

XMM target name :

ESO 15- IG 011

OBS ID : 103861701

Source number : 24

X-ray coordinates :

α : 04 36 57.07

δ : -77 59 25.6

Center coordinates :

α : 04 36 57.04

δ : -77 59 25.5

Plate reference :

Origin : CDS HIPs Network

Plate : MAMA srcj

Pixel : 0.40 "/pix

Contour levels (counts) :

1.00E+00 1.64E+00

2.10E+00 2.43E+00

XMM SSC

Apr 22 03:50:31 2019