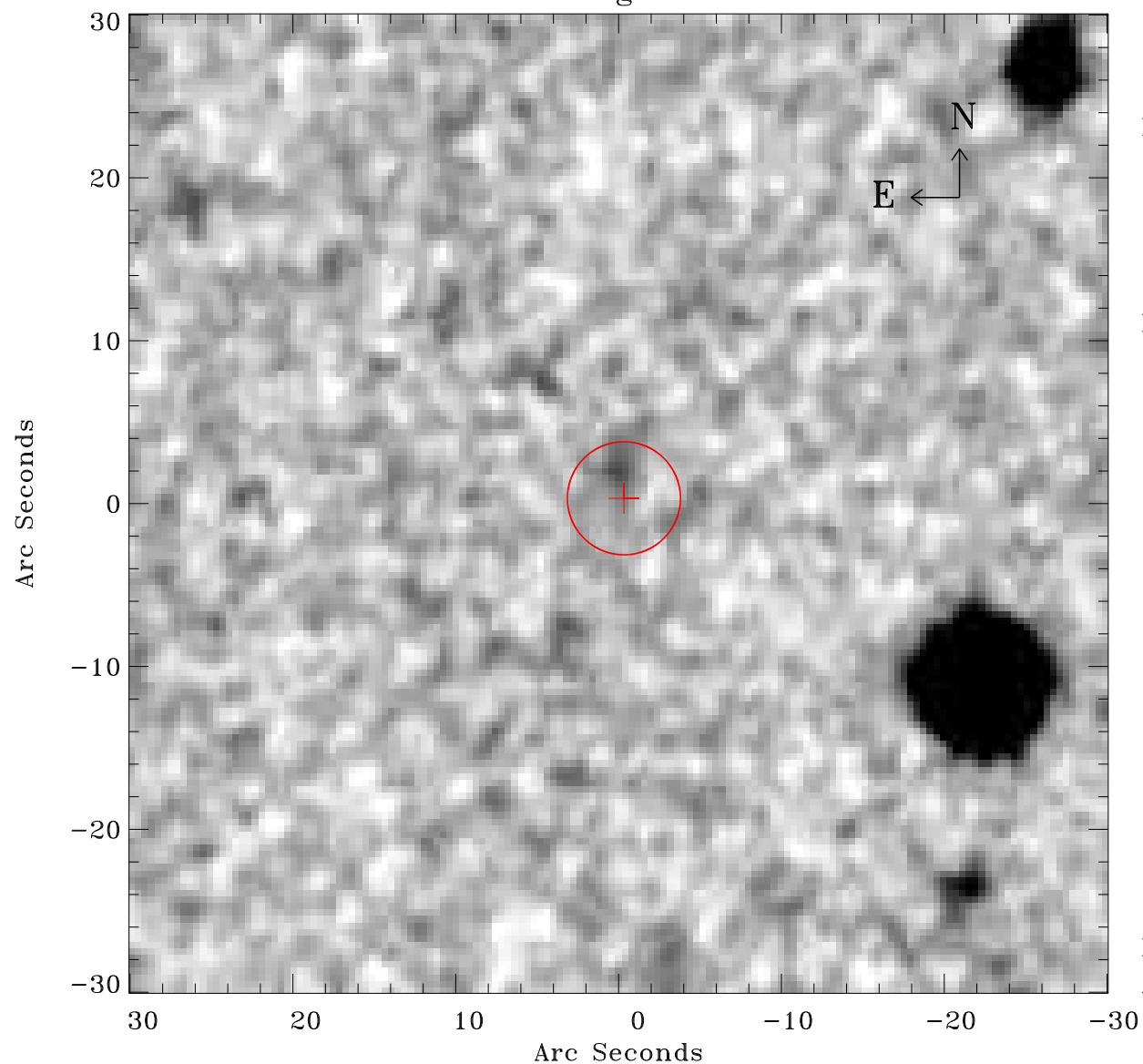


EPIC source finding chart ACDS V10.0



Principal Investigator :

Dr Bernd Aschenbach

XMM target name :

ESO 15- IG 011

OBS ID : 103861701

Source number : 28

X-ray coordinates :

α : 04 36 04.79

δ : -77 56 04.8

Center coordinates :

α : 04 36 04.76

δ : -77 56 04.7

Plate reference :

Origin : CDS HIPs Network

Plate : MAMA srcj

Pixel : 0.40 "/pix

Error circle :

R_{90} (") : 3.4

XMM SSC

Apr 22 03:50:03 2019