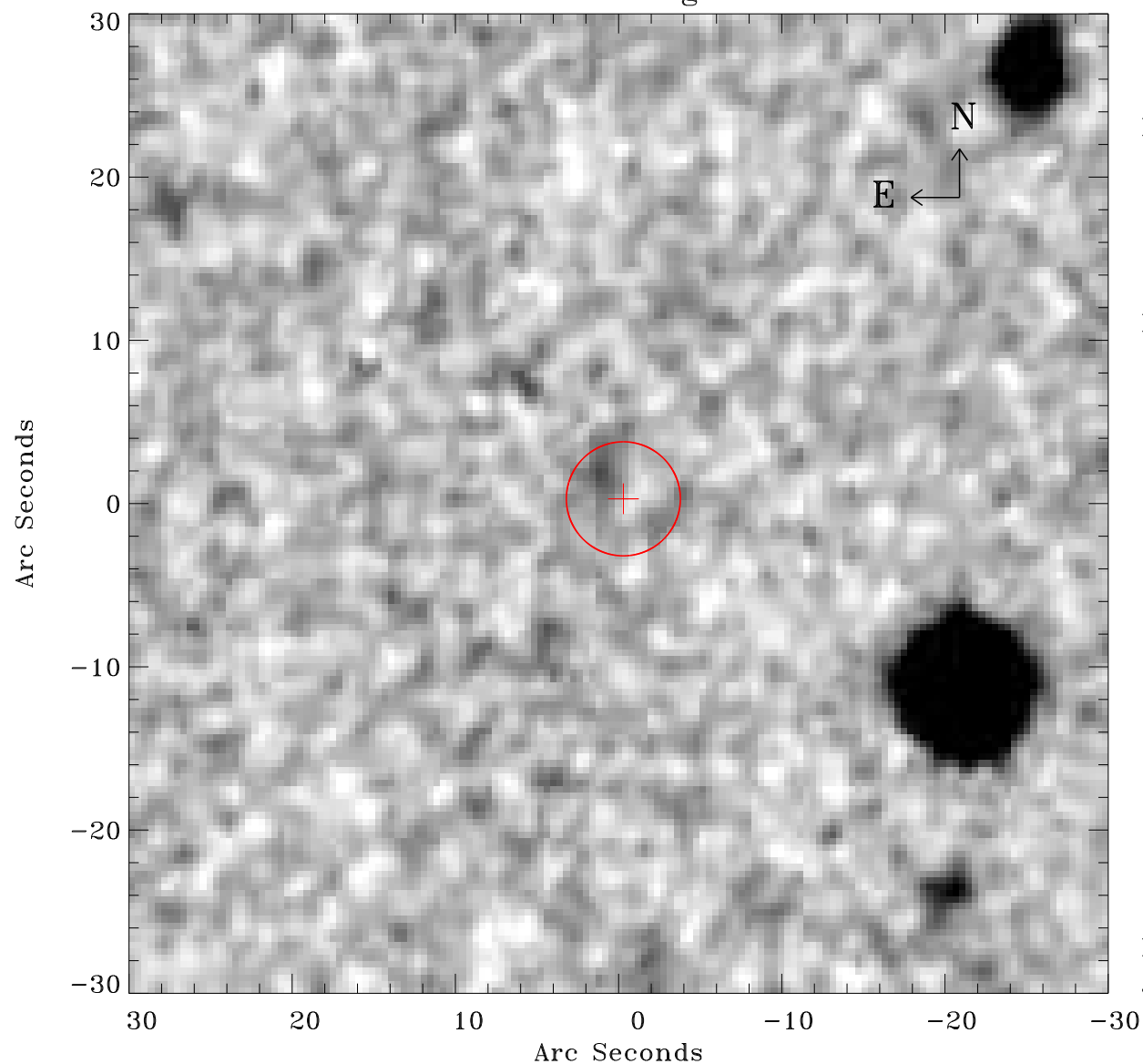


# EPIC source finding chart V10



Principal Investigator :

Dr Bernd Aschenbach

XMM target name :

ESO 15- IG 011

OBS ID : 103861701

Source number : 28

X-ray coordinates :

$\alpha$  : 04 36 04.45

$\delta$  : -77 56 04.6

Center coordinates :

$\alpha$  : 04 36 04.42

$\delta$  : -77 56 04.5

Plate reference :

Origin : CDS HIPs Network

Plate : MAMA srcj

Pixel : 0.40 "/pix

Error circle :

$R_{90}$  (") : 3.5

XMM SSC

Jan 20 03:11:44 2025