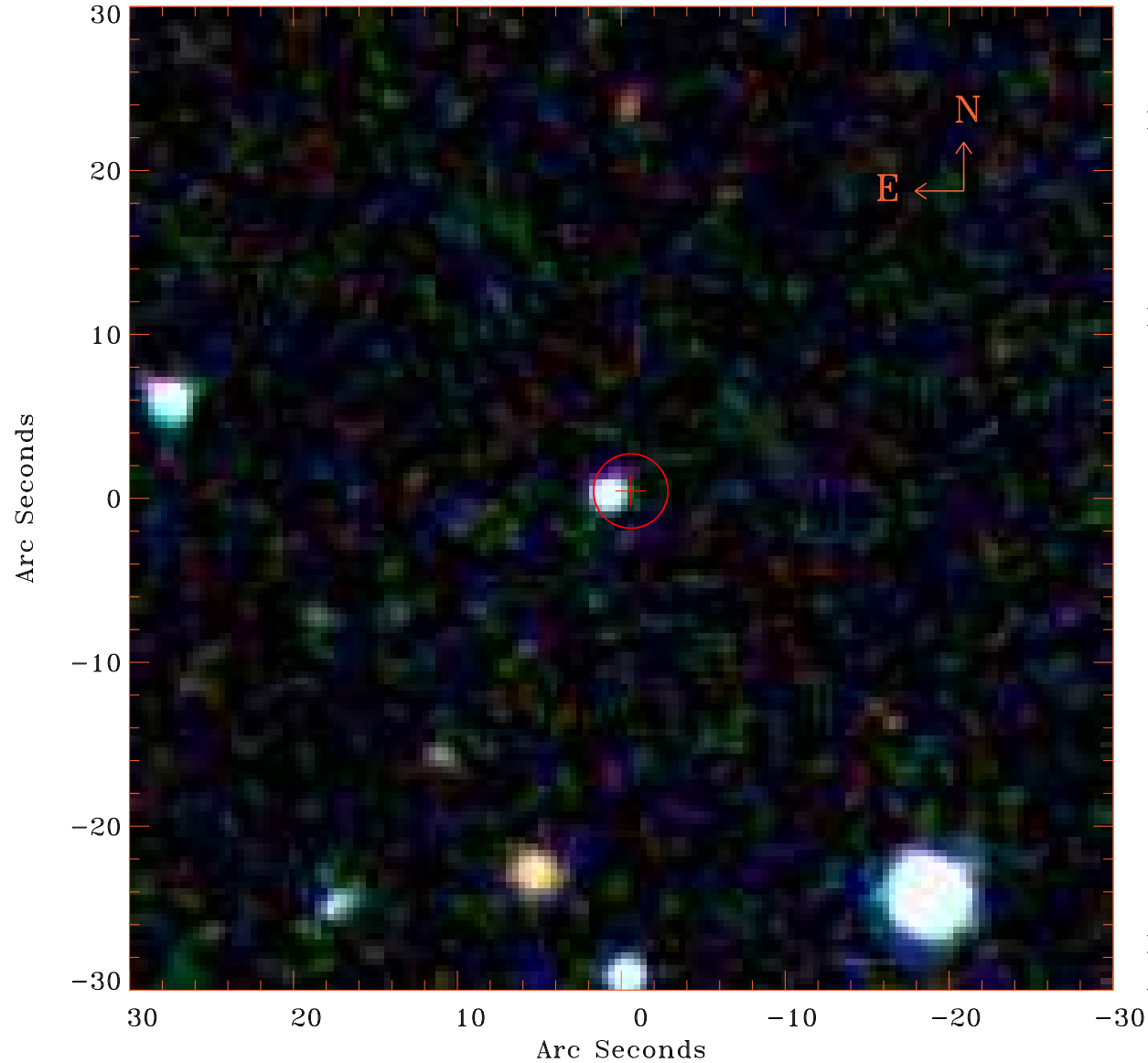


# EPIC source finding chart V10.0



Principal Investigator :

Dr Bernd Aschenbach

XMM target name :

MK 728

OBS ID : 103861801

Source number : 9

X-ray coordinates :

$\alpha$  : 11 00 32.12

$\delta$  : +11 10 50.6

Center coordinates :

$\alpha$  : 11 00 32.14

$\delta$  : +11 10 50.6

Plate reference :

Origin : SDSS

Color coding :

i band ●

r band ●

g band ●

Error circle :

$R_{90}$  (") : 2.3

XMM SSC

Apr 25 16:52:50 2019