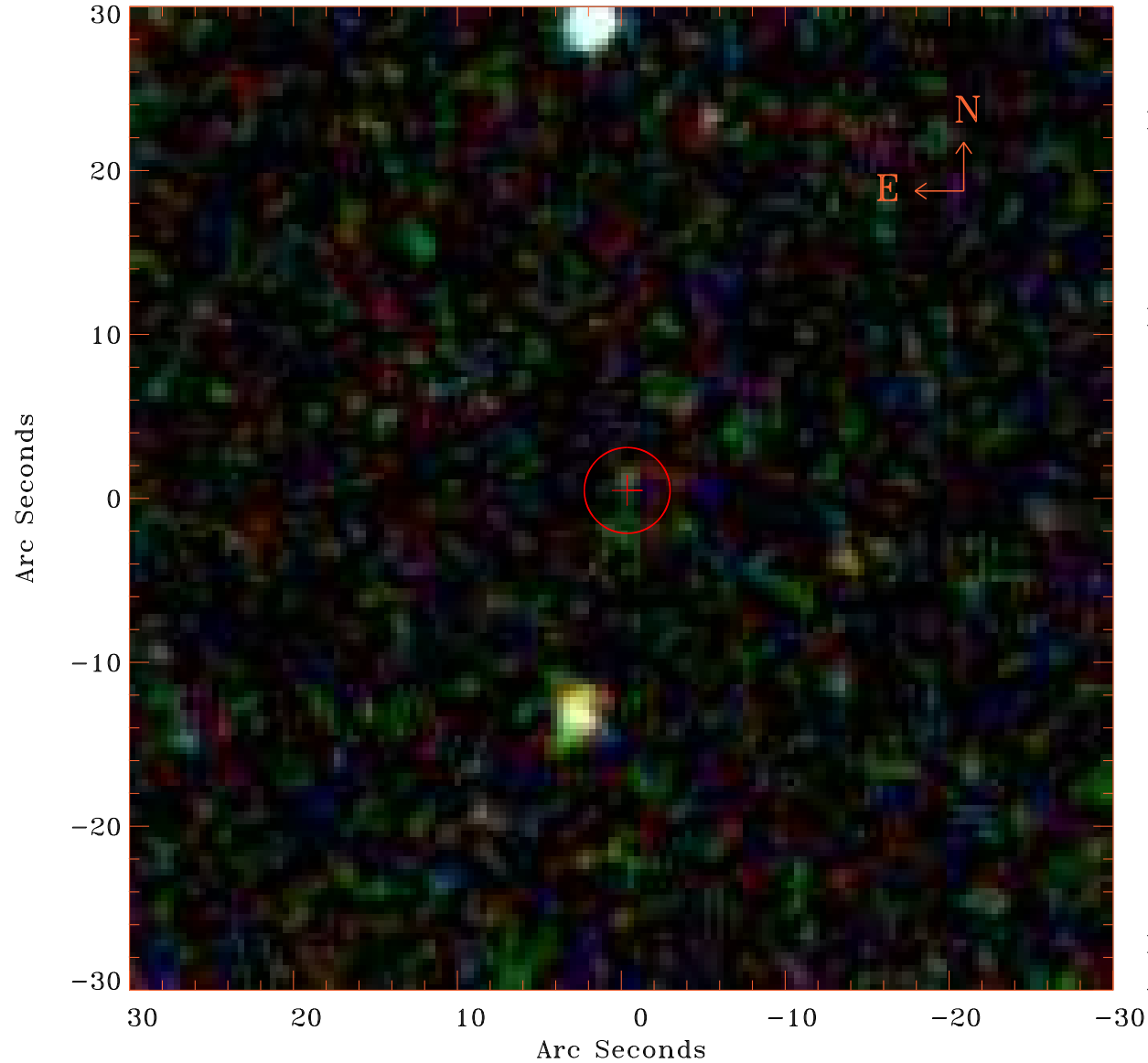


# EPIC source finding chart V10.0



Principal Investigator :  
Dr Bernd Aschenbach

XMM target name :  
MK 728

OBS ID : 103861801  
Source number : 29

X-ray coordinates :  
 $\alpha$  : 11 01 33.91  
 $\delta$  : +11 04 42.9

Center coordinates :  
 $\alpha$  : 11 01 33.91  
 $\delta$  : +11 04 42.8

Plate reference :  
Origin : SDSS

Color coding :  
i band ●  
r band ●  
g band ●

Error circle :  
 $R_{90}$  (") : 2.6

XMM SSC  
Apr 25 16:55:38 2019