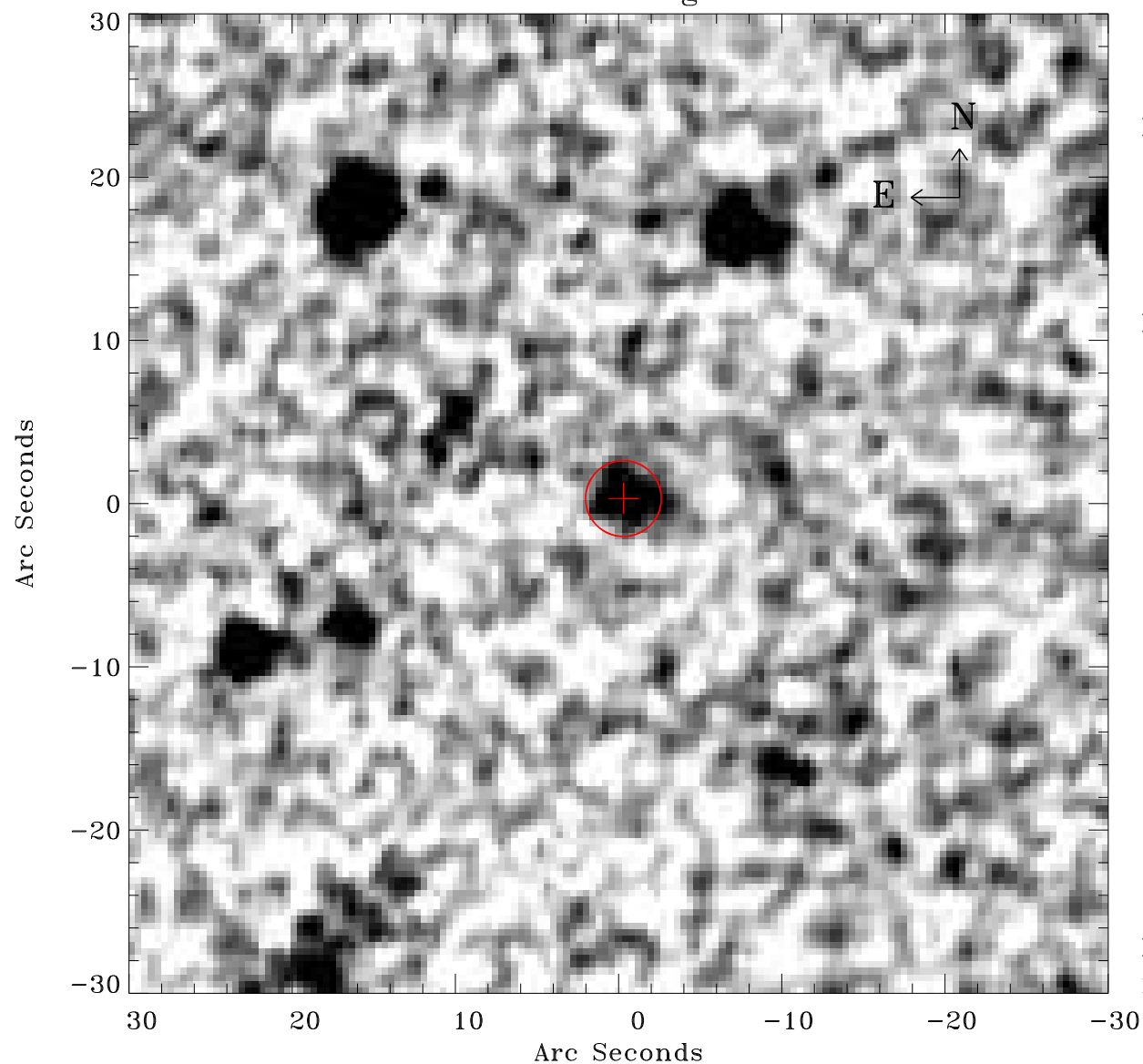


# EPIC source finding chart V10



Principal Investigator :

Dr Bernd Aschenbach

XMM target name :

ESO 15- IG 011

OBS ID : 103862001

Source number : 7

X-ray coordinates :

$\alpha$  : 04 39 14.50

$\delta$  : -77 54 53.6

Center coordinates :

$\alpha$  : 04 39 14.46

$\delta$  : -77 54 53.5

Plate reference :

Origin : CDS HIPs Network

Plate : MAMA srcj

Pixel : 0.40 "/pix

Error circle :

$R_{90}$  (") : 2.3

XMM SSC

Feb 3 15:19:46 2025