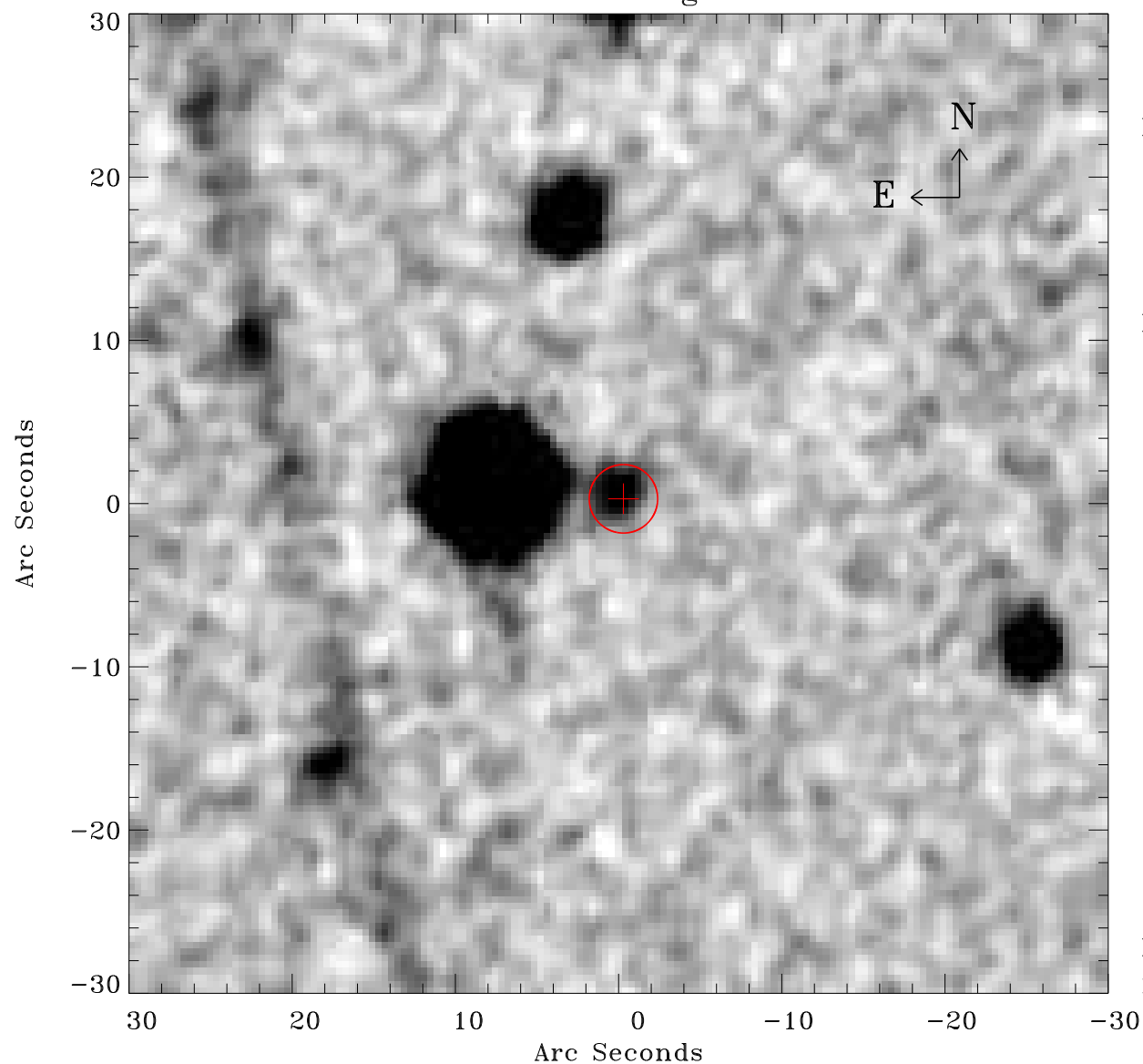


# EPIC source finding chart V10



Principal Investigator :

Dr Bernd Aschenbach

XMM target name :

ESO 15- IG 011

OBS ID : 103862001

Source number : 8

X-ray coordinates :

$\alpha$  : 04 36 23.70

$\delta$  : -78 08 57.7

Center coordinates :

$\alpha$  : 04 36 23.67

$\delta$  : -78 08 57.6

Plate reference :

Origin : CDS HIPs Network

Plate : MAMA srcj

Pixel : 0.40 "/pix

Error circle :

$R_{90}$  (") : 2.1

XMM SSC

Feb 3 15:18:35 2025