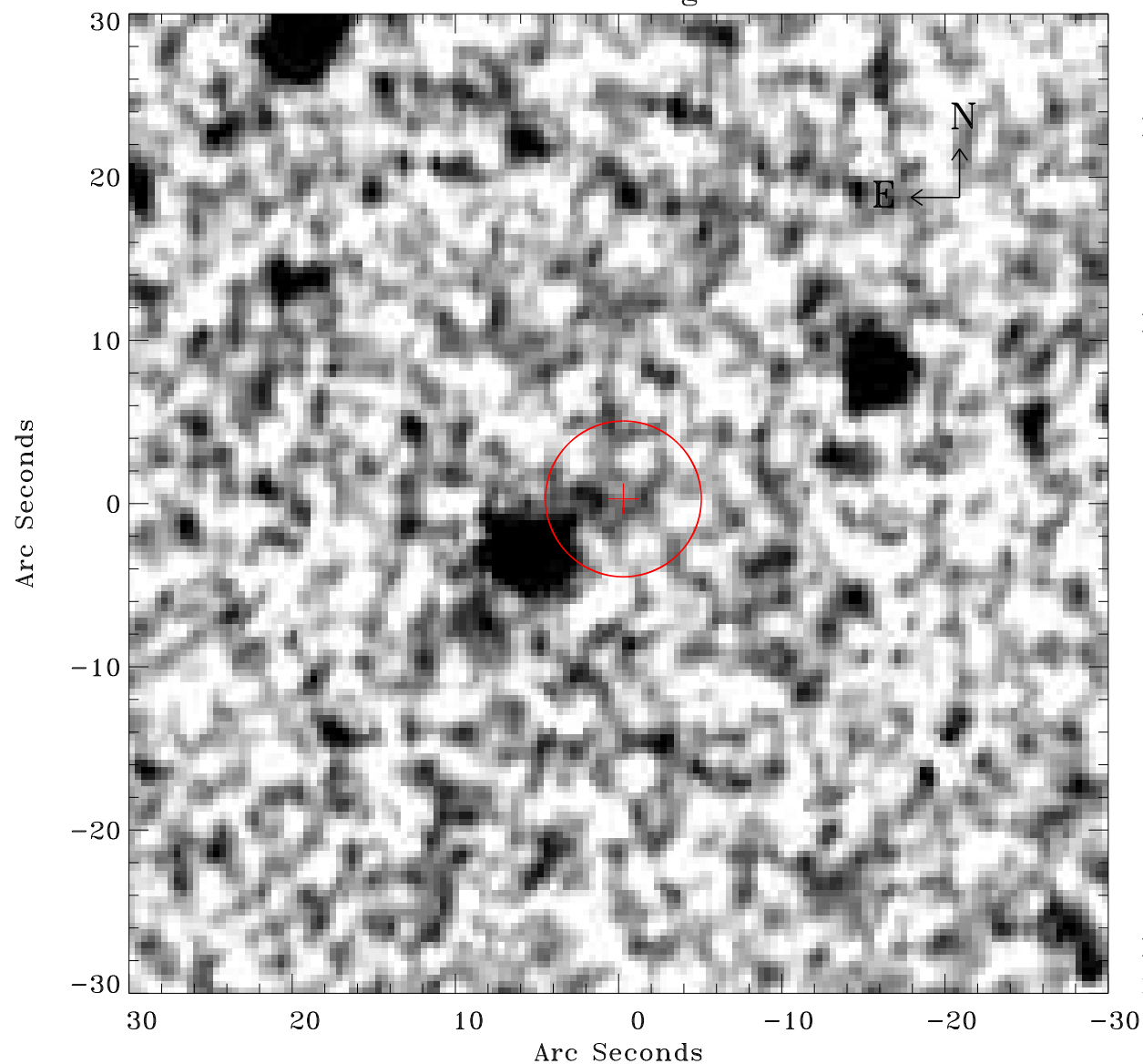


# EPIC source finding chart V10



Principal Investigator :

Dr Bernd Aschenbach

XMM target name :

ESO 15- IG 011

OBS ID : 103862001

Source number : 32

X-ray coordinates :

$\alpha$  : 04 36 27.56

$\delta$  : -78 01 46.8

Center coordinates :

$\alpha$  : 04 36 27.53

$\delta$  : -78 01 46.7

Plate reference :

Origin : CDS HIPs Network

Plate : MAMA srcj

Pixel : 0.40 "/pix

Error circle :

$R_{90}$  (") : 4.7

XMM SSC

Feb 3 15:18:56 2025