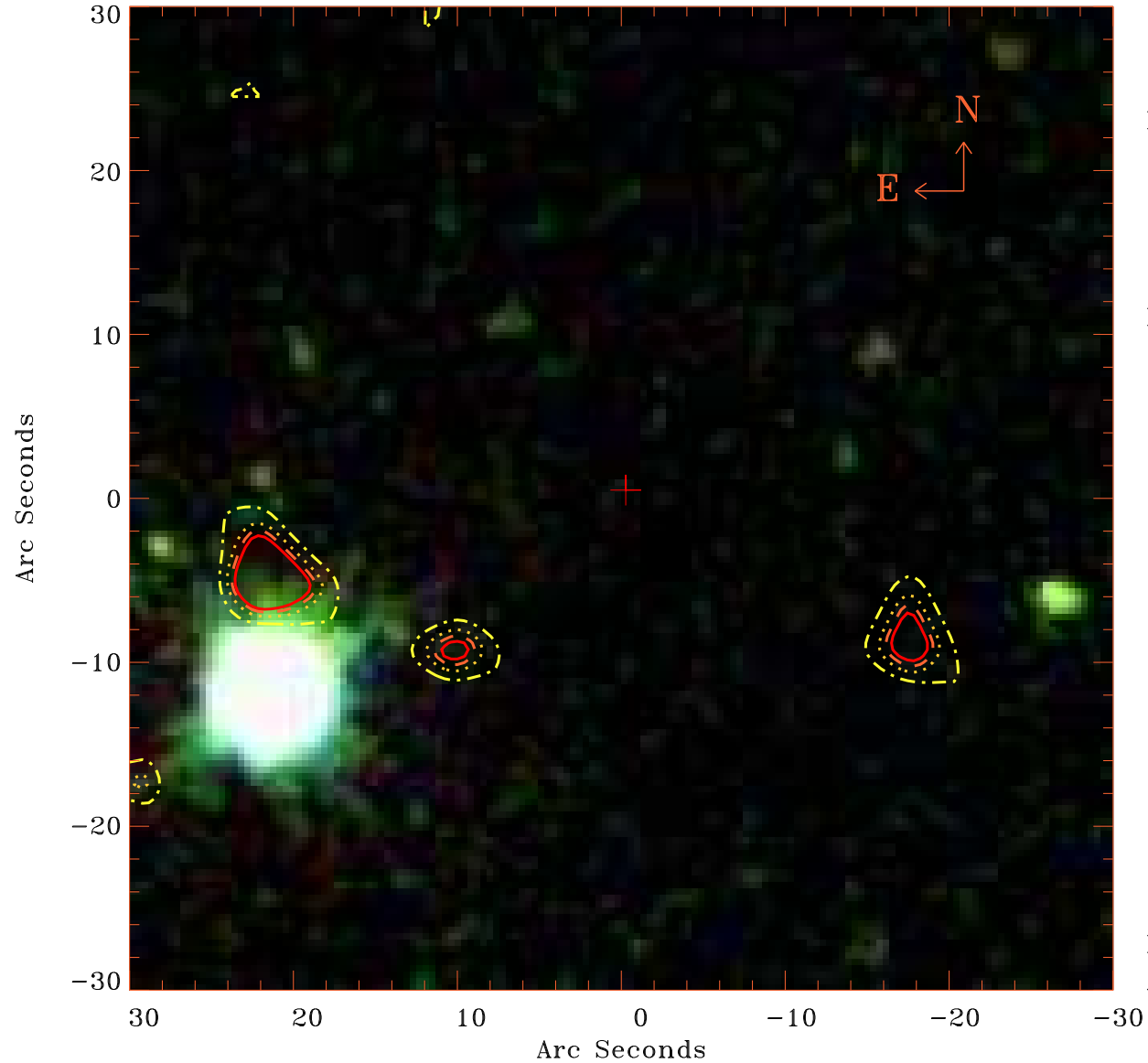


# EPIC source finding chart V10.0



Principal Investigator :

Dr Bernd Aschenbach

XMM target name :

UGC 3973

OBS ID : 103862101

Source number : 16

X-ray coordinates :

$\alpha$  : 07 42 20.36

$\delta$  : +49 48 29.9

Center coordinates :

$\alpha$  : 07 42 20.35

$\delta$  : +49 48 29.7

Plate reference :

Origin : SDSS

Color coding :

i band ●

r band ●

g band ●

Contour levels (counts) :



XMM SSC

Apr 20 08:18:53 2019