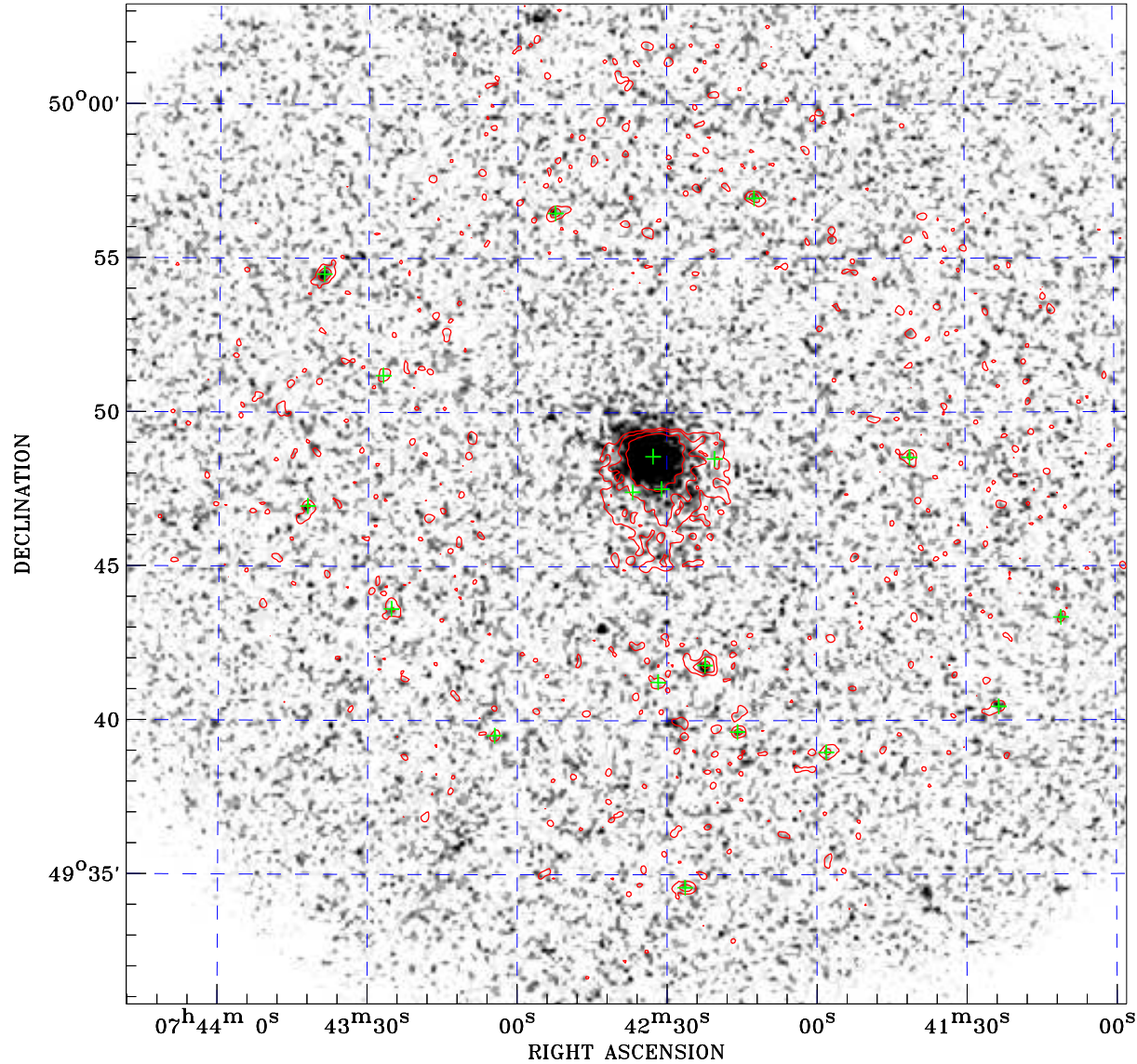
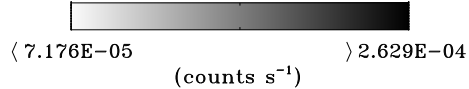


PDF XMM ROSAT image ACDS V10.0



ROSAT image gray scale (Log) :



⊙ Epic image contour
levels at 2, 7 and 30 σ

+ Detected Epic sources

Principal Investigator :
Dr Bernd Aschenbach

XMM target name :
UGC 3973

Observation ID :
0103862101

Epic image :

α : 07 42 38.14
 δ : +49 47 02.5

Energy band : 0.2–12.0 keV

MOS1 : 5908 s
MOS2 : 5907 s
PN : 5120 s

Contour levels (counts) :
2 σ :2.814E-01 7 σ :8.300E-01
30 σ :3.353E+00

Nearest ROSAT image
from Epic image center :
Observation : 702884h
Instrument : HRI
 α : 07 42 43.49
 δ : +49 46 59.7

Other ROSAT images :
None

XMM SSC
Apr 20 08:15:15 2019