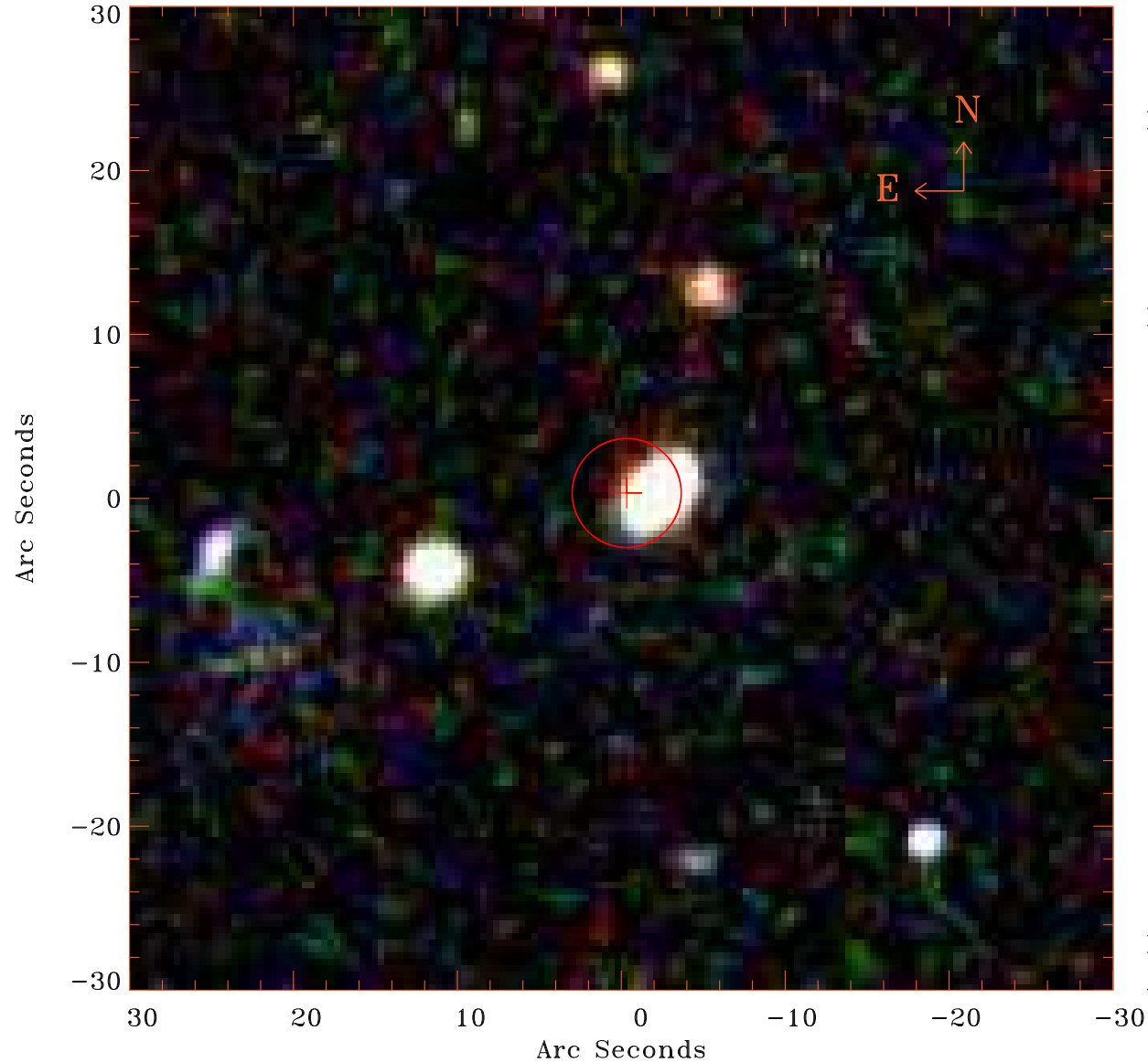


EPIC source finding chart V10.0



Principal Investigator :

Dr Bernd Aschenbach

XMM target name :

Virgo 2

OBS ID : 106060201

Source number : 11

X-ray coordinates :

α : 12 30 30.67

δ : +12 52 01.3

Center coordinates :

α : 12 30 30.67

δ : +12 52 01.4

Plate reference :

Origin : SDSS

Color coding :

i band ●

r band ●

g band ●

Error circle :

R_{90} (") : 3.3

XMM SSC

Apr 30 10:39:24 2019