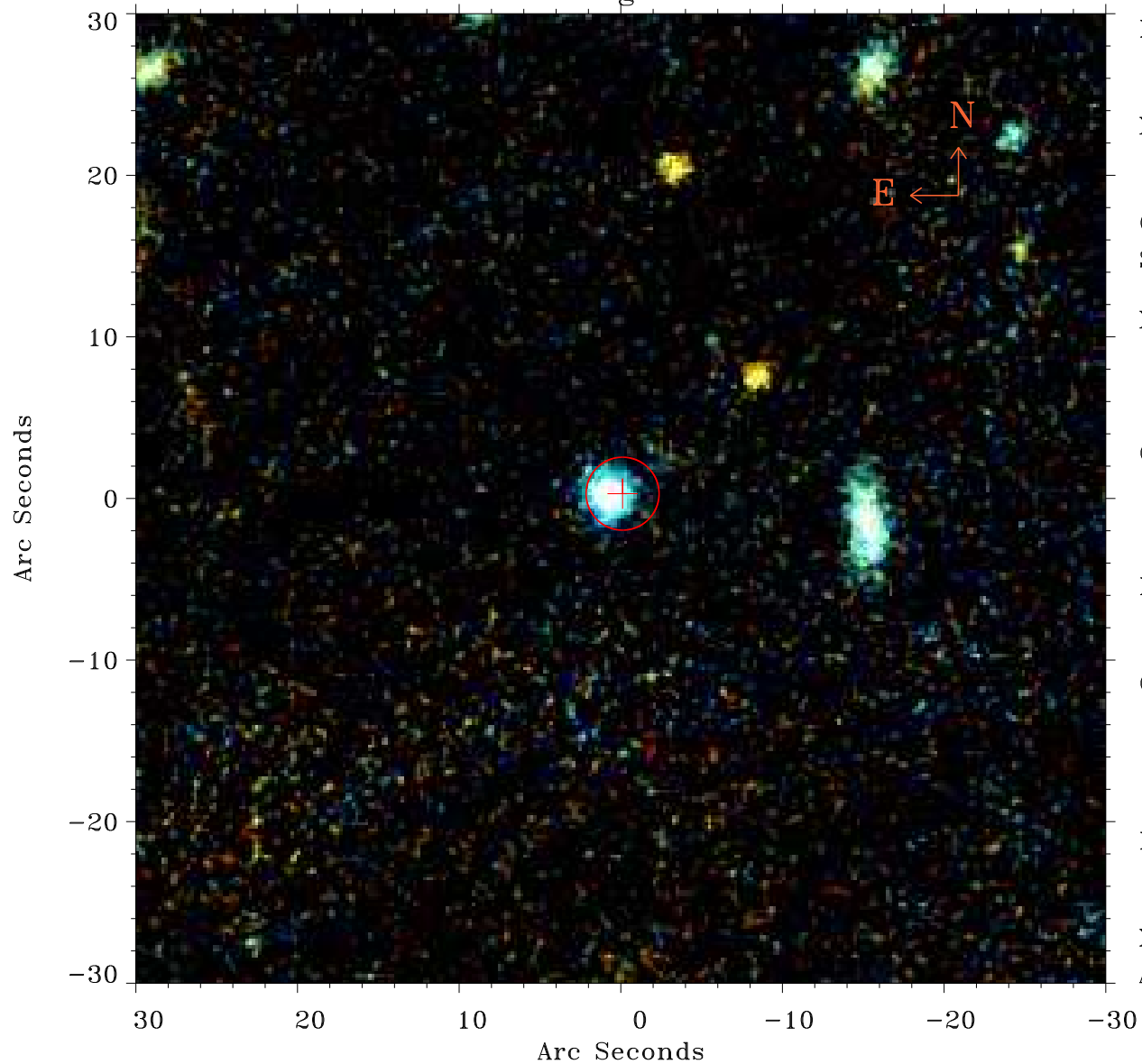


# EPIC source finding chart ACDS V10.0



Principal Investigator :

Dr Bernd Aschenbach

XMM target name :

Virgo 3

OBS ID : 106060301

Source number : 10

X-ray coordinates :

$\alpha$  : 12 31 31.48

$\delta$  : +13 26 25.6

Center coordinates :

$\alpha$  : 12 31 31.48

$\delta$  : +13 26 25.5

Plate reference :

Origin : PanSTARRS-DR1

Color coding :

z band ●

(z+g)/2 ●

g band ●

Error:

R90 : 2.2 arcsec

XMM SSC

Apr 17 18:37:54 2019