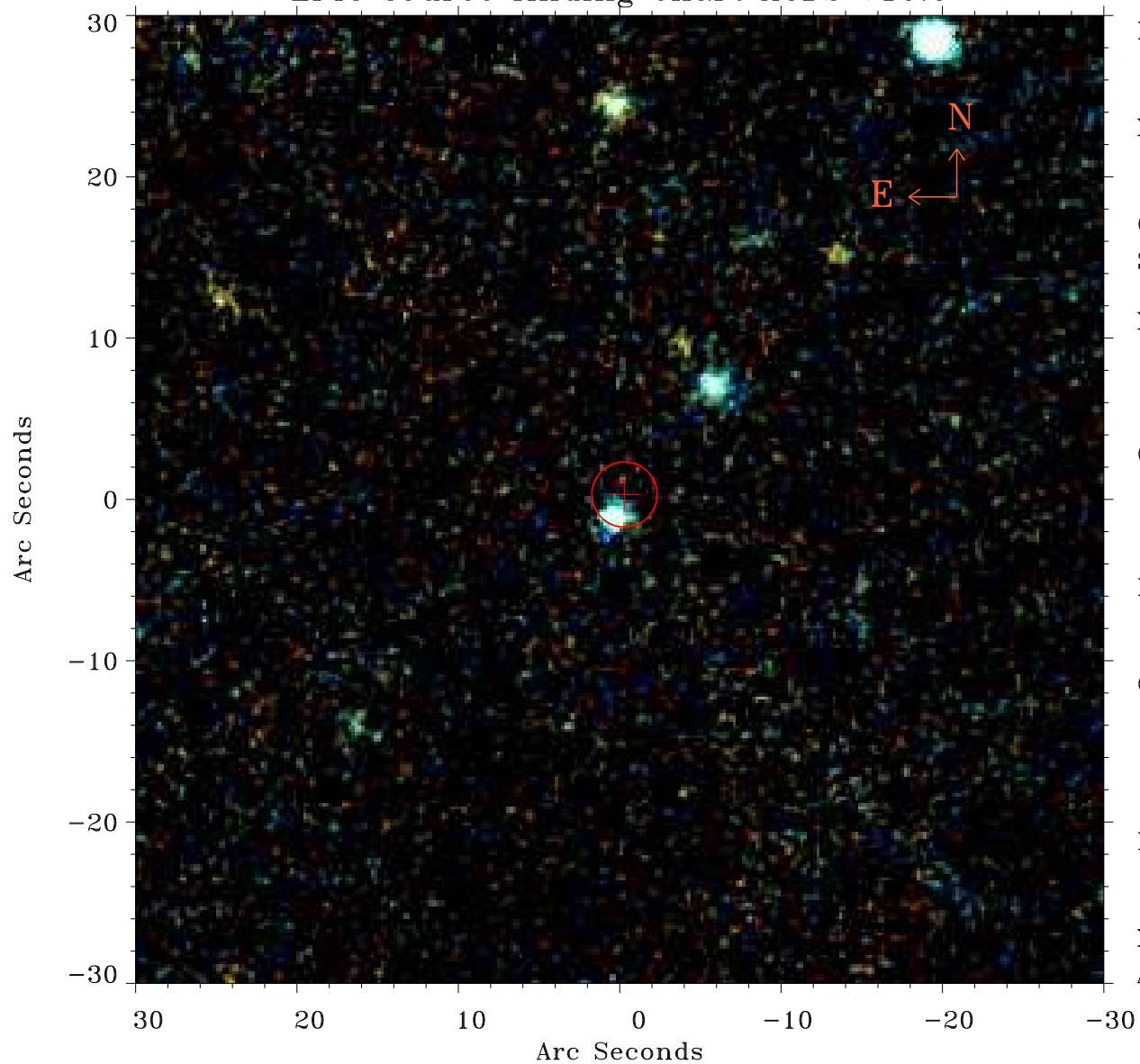


# EPIC source finding chart ACDS V10.0



Principal Investigator :

Dr Bernd Aschenbach

XMM target name :

Virgo 8

OBS ID : 106061401

Source number : 31

X-ray coordinates :

$\alpha$  : 12 30 16.77

$\delta$  : +15 01 19.0

Center coordinates :

$\alpha$  : 12 30 16.78

$\delta$  : +15 01 18.9

Plate reference :

Origin : PanSTARRS-DR1

Color coding :

z band ●

(z+g)/2 ●

g band ●

Error:

R90 : 2.0 arsec

XMM SSC

Apr 21 13:18:04 2019