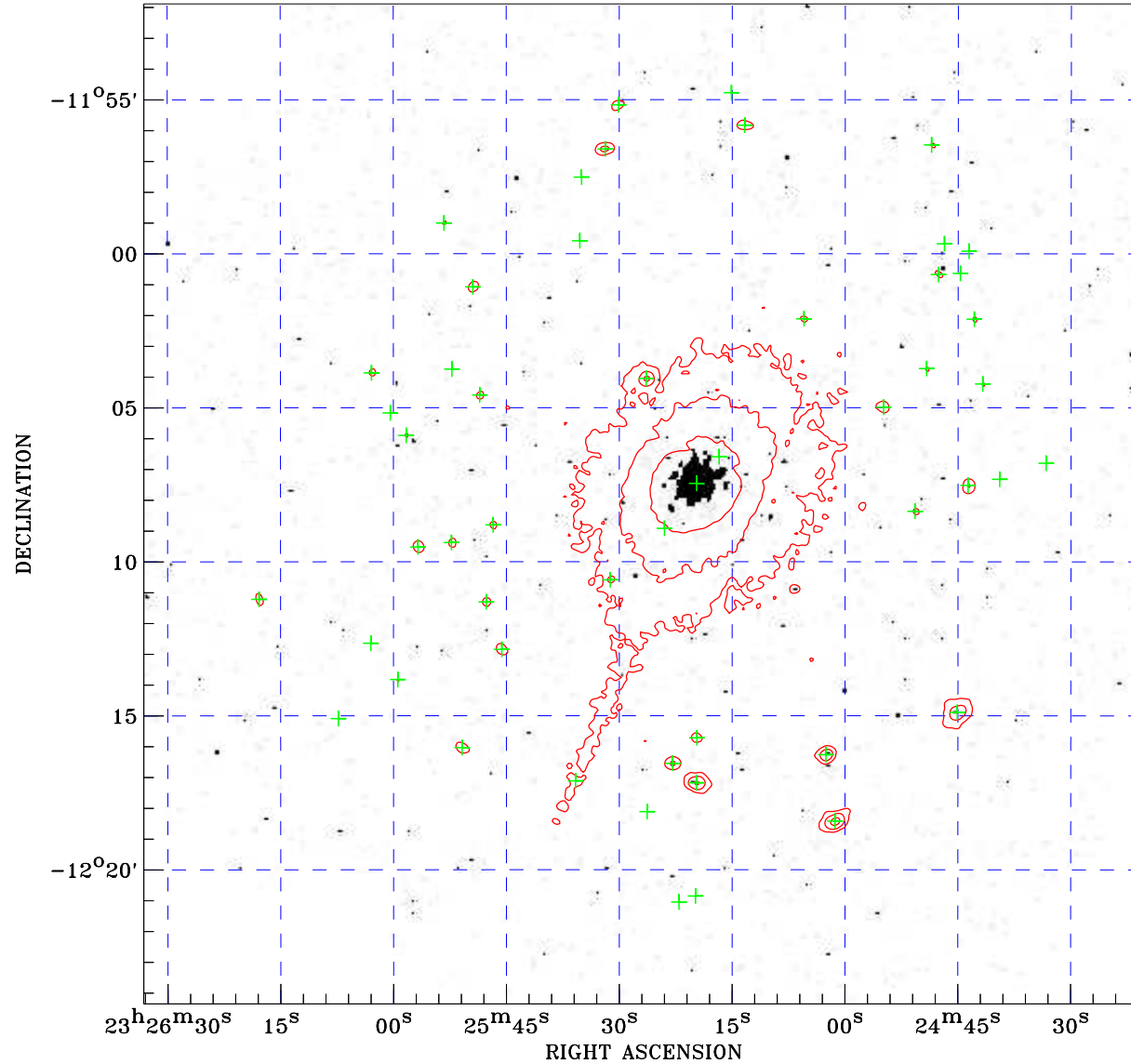



PDF XMM ROSAT image ACDS V10.0



ROSAT image gray scale (Log) :

 $\langle 5.354\text{E}-04$ $\rangle 5.356\text{E}-04$
 (counts s⁻¹)

⊙ Epic image contour
 levels at 2, 7 and 30 σ

+ Detected Epic sources

Principal Investigator :
 Dr Richard Mushotzky

XMM target name :
 Abell 2597

Observation ID :
 0108460201

Epic image :

α : 23 25 26.74
 δ : -12 08 07.4

Energy band : 0.2–12.0 keV

MOS1 : 15920 s
 MOS2 : 15860 s
 PN : 12237 s

Contour levels (counts) :
 2 σ :2.169E+00 7 σ :6.420E+00
 30 σ 2.597E+01

Nearest ROSAT image
 from Epic image center :

Observation : 800111h-0
 Instrument : HRI
 α : 23 25 28.13
 δ : -12 08 48.2

Other ROSAT images :
 None

XMM SSC

Apr 23 00:01:44 2019