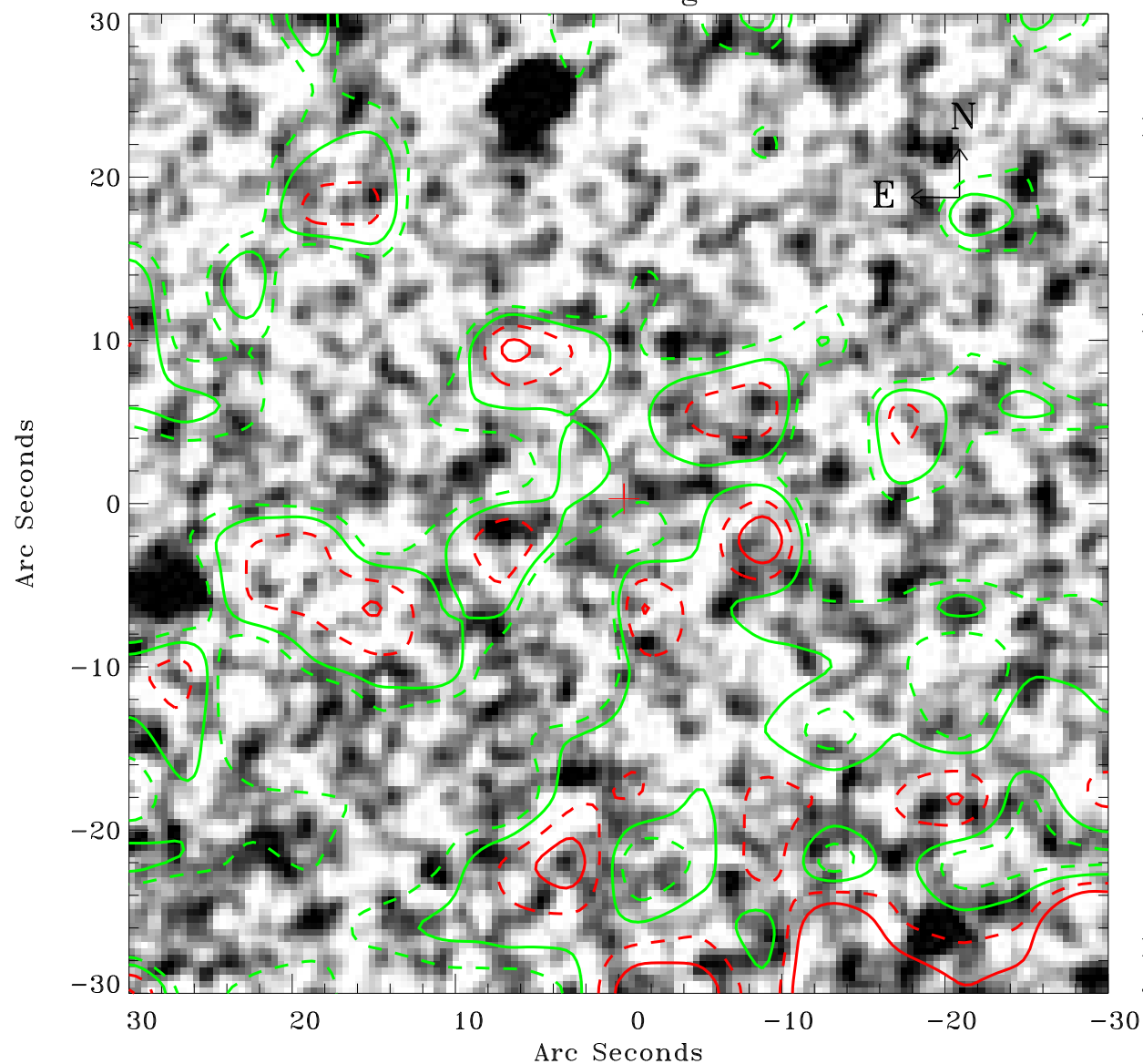


# EPIC source finding chart V10



Principal Investigator :

Prof Keith Mason

XMM target name :

REJ2248-511

OBS ID : 109070501

Source number : 2

X-ray coordinates :

$\alpha$  : 22 48 43.34

$\delta$  : -51 08 56.0

Center coordinates :

$\alpha$  : 22 48 43.33

$\delta$  : -51 08 55.9

Plate reference :

Origin : CDS HIPs Network

Plate : MAMA srcj

Pixel : 0.40 "/pix

Contour levels (counts) :

--- 6.98E+01 --- 7.29E+01

--- 7.73E+01 --- 8.18E+01

XMM SSC

Jan 19 01:55:57 2025