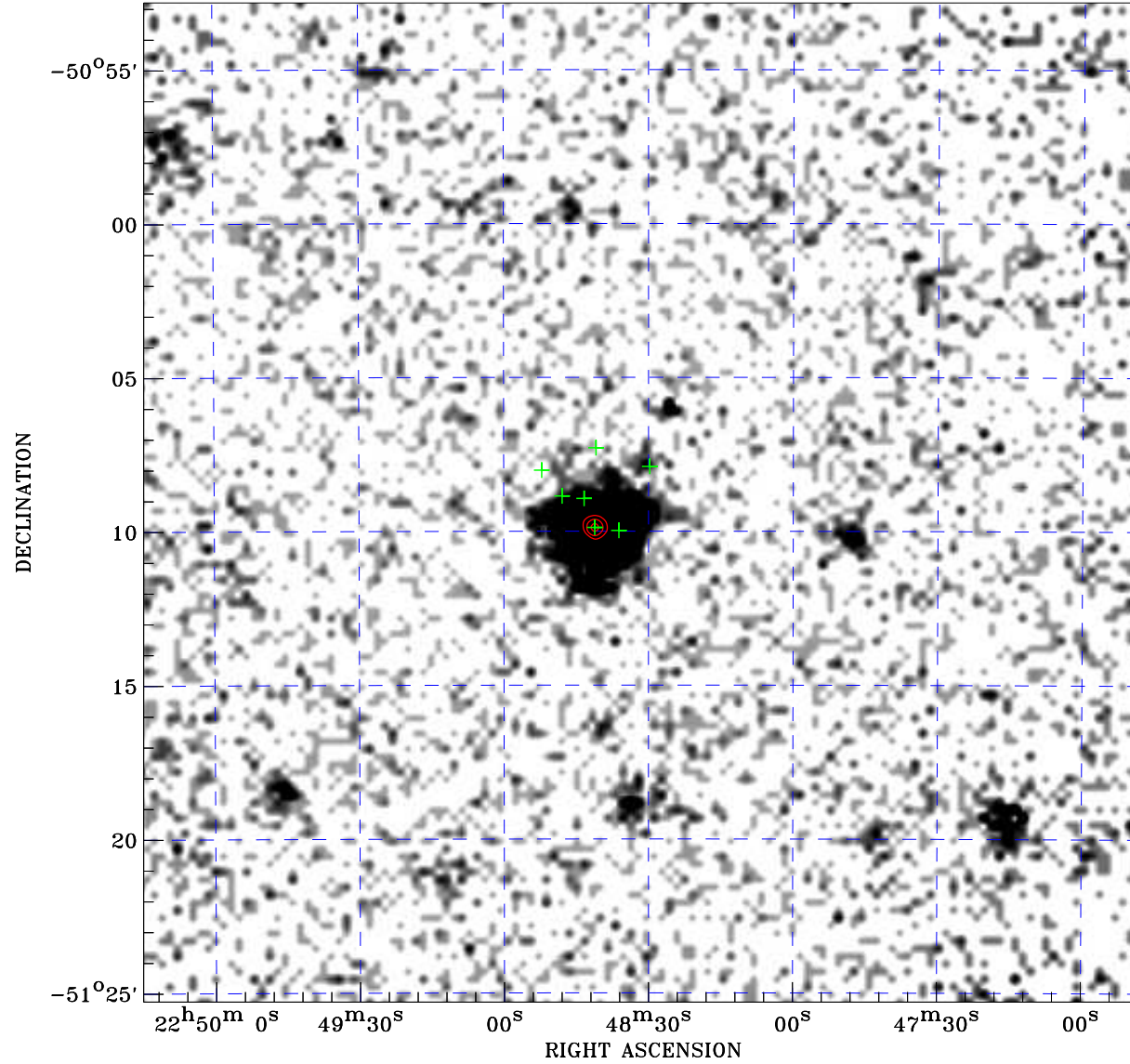



PDF XMM ROSAT image ACDS V10.0



ROSAT image gray scale (Log) :

 $\langle 8.219\text{E-}05$ $\rangle 7.862\text{E-}04$
(counts s⁻¹)

⊙ Epic image contour
levels at 2, 7 and 30 σ

+ Detected Epic sources

Principal Investigator :
Prof Keith Mason

XMM target name :
REJ2248-511

Observation ID :
0109070501

Epic image :
 α : 22 48 31.09
 δ : -51 09 04.1
Energy band : 0.2-12.0 keV
MOS1 : 0 s
MOS2 : 0 s
PN : 8170 s

Contour levels (counts) :
2 σ :1.101E+02 7 σ :2.456E+02
30 σ 8.689E+02

Nearest ROSAT image
from Epic image center :
Observation : 701601p
Instrument : PSPCB
 α : 22 48 59.99
 δ : -51 13 12.1

Other ROSAT images :
None

XMM SSC
Jan 19 01:55:00 2025