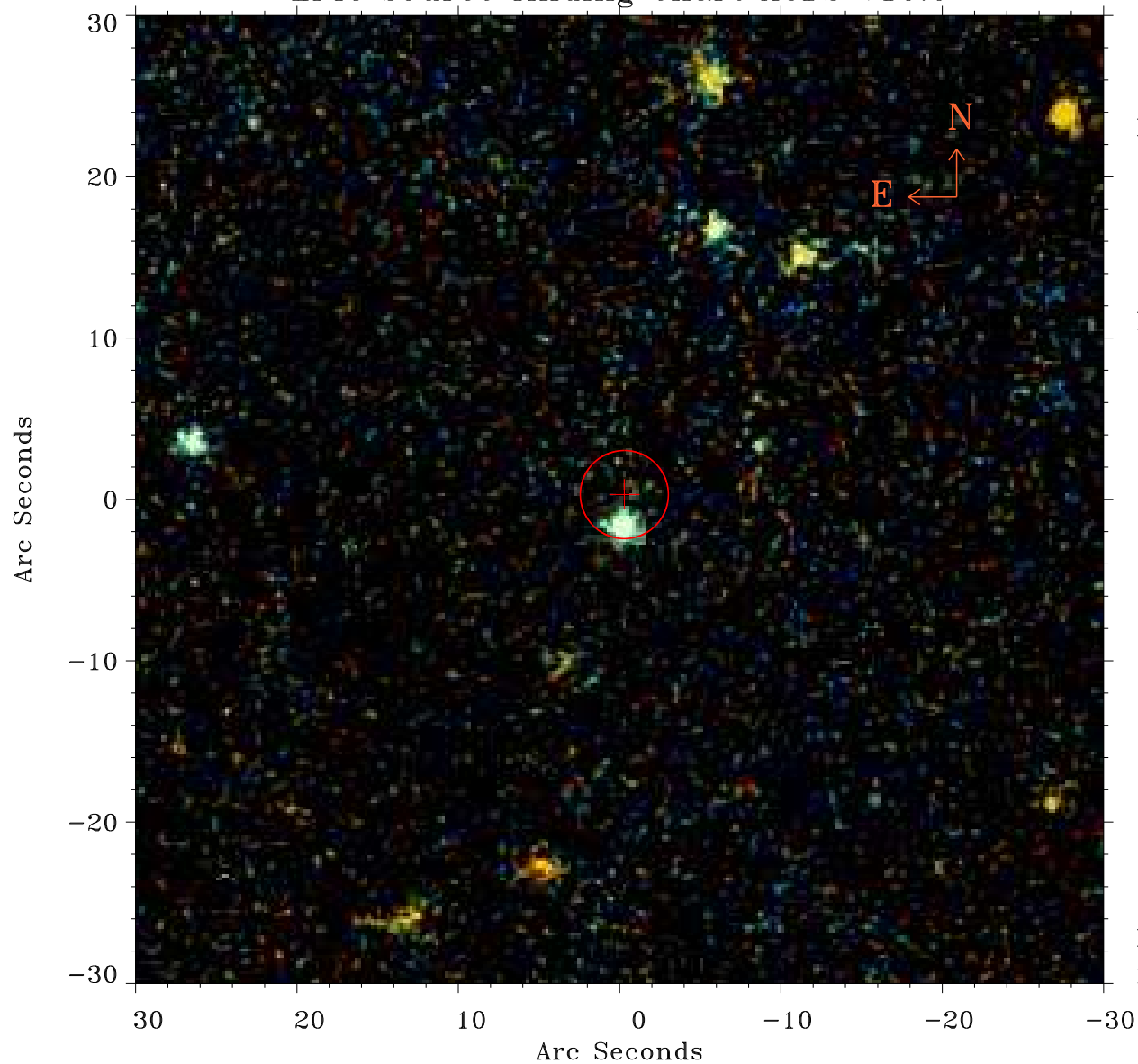


# EPIC source finding chart ACDS V10.0



Principal Investigator :

Prof Keith Mason

XMM target name :

MRK590

OBS ID : 109130301

Source number : 17

X-ray coordinates :

$\alpha$  : 02 14 02.70

$\delta$  : -00 39 57.2

Center coordinates :

$\alpha$  : 02 14 02.71

$\delta$  : -00 39 57.3

Plate reference :

Origin : PanSTARRS-DR1

Color coding :

z band ●

(z+g)/2 ●

g band ●

Error:

R90 : 2.7 arcsec

XMM SSC

May 3 12:40:55 2019