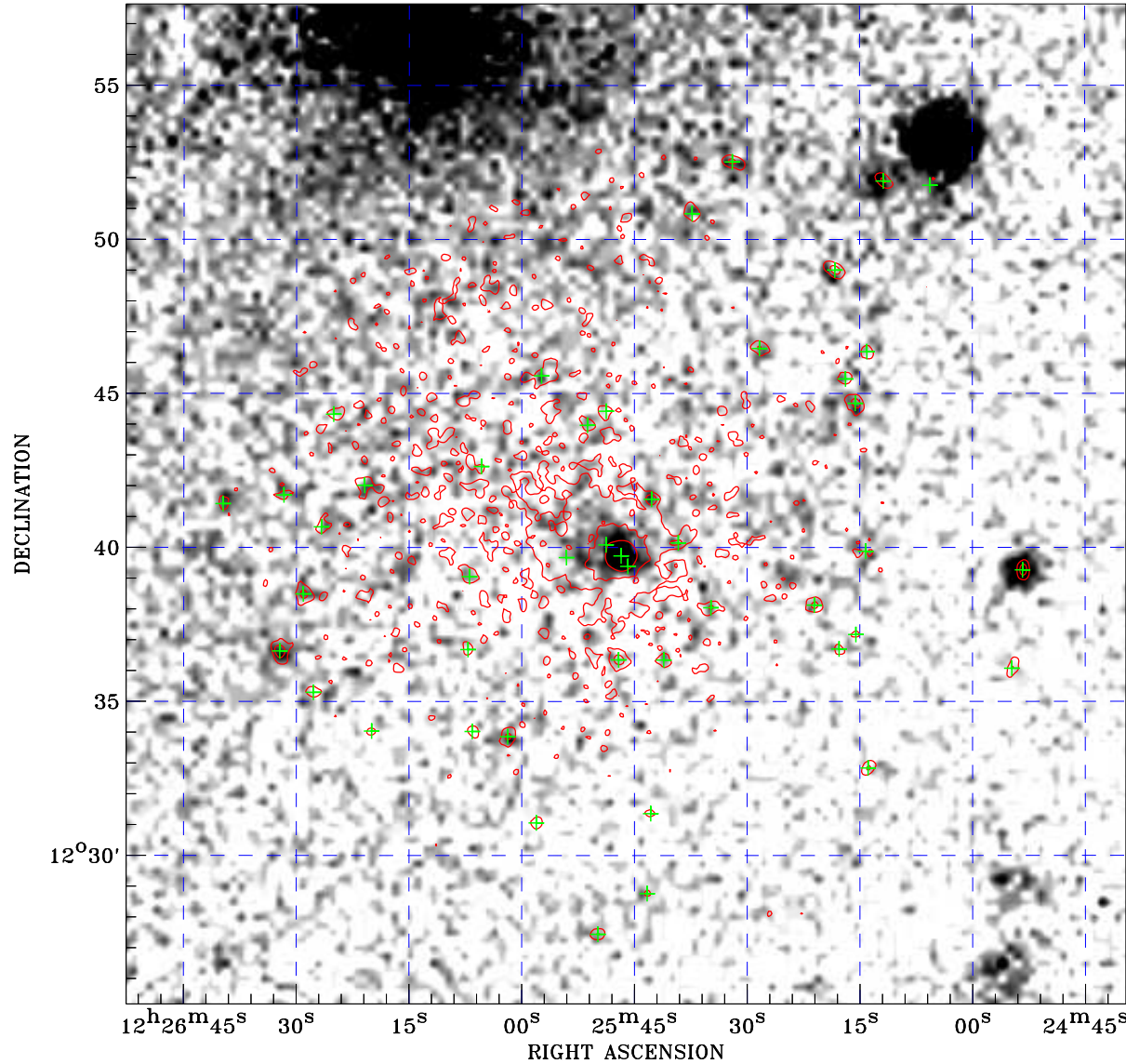


PDF XMM ROSAT image ACDS V10.0



Principal Investigator :
Dr Michael Watson

XMM target name :
NGC 4388

Observation ID :
0110930701

Epic image :
 α : 12 25 46.13
 δ : +12 41 25.0
 Energy band : 0.2–12.0 keV
 MOS1 : 11666 s
 MOS2 : 11666 s
 PN : 7220 s

Contour levels (counts) :
 2 σ :1.670E+00 7 σ :4.120E+00
 30 σ :1.539E+01

Nearest ROSAT image
from Epic image center :
 Observation : 701404p
 Instrument : PSPCB
 α : 12 25 57.91
 δ : +12 36 35.7

Other ROSAT images :
None

XMM SSC
Apr 26 06:12:42 2019

⊙ Epic image contour
levels at 2, 7 and 30 σ

+ Detected Epic sources