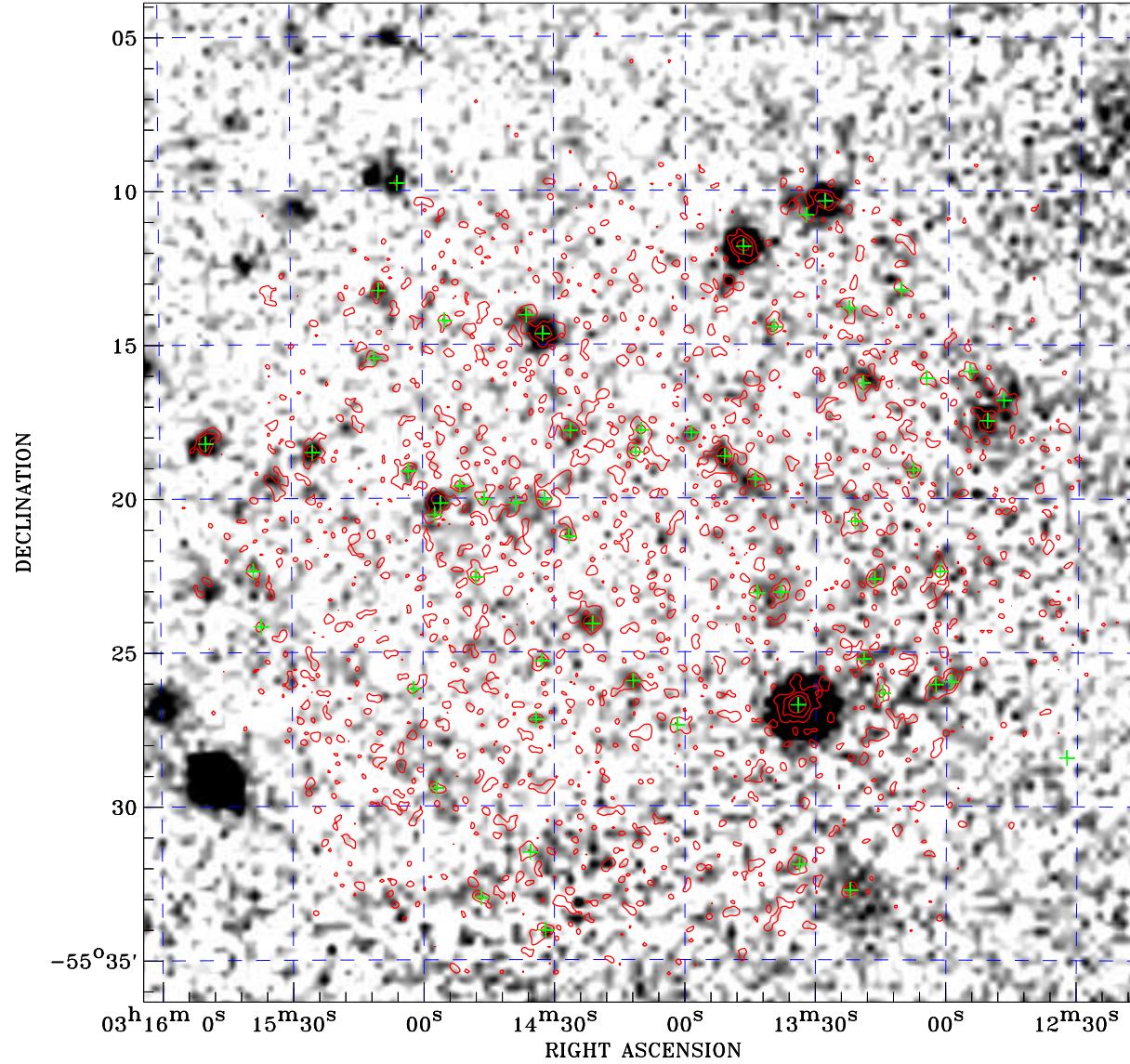



# PDF XMM ROSAT image ACDS V10.0



ROSAT image gray scale (Log) :  
  
 $\langle 7.790\text{E-}05$   $\rangle 2.684\text{E-}04$   
 (counts s<sup>-1</sup>)

⊙ Epic image contour  
 levels at 2, 7 and 30 $\sigma$

+ Detected Epic sources

Principal Investigator :  
 Dr Michael Watson

XMM target name :  
 Marano04

Observation ID :  
 0110970401

Epic image :  
 $\alpha$  : 03 14 09.58  
 $\delta$  : -55 20 09.2  
 Energy band : 0.2-12.0 keV  
 MOS1 : 8465 s  
 MOS2 : 8491 s  
 PN : 4370 s

Contour levels (counts) :  
 2 $\sigma$  :3.916E-01 7 $\sigma$  :9.784E-01  
 30 $\sigma$  :3.678E+00

Nearest ROSAT image  
 from Epic image center :  
 Observation : 701036p  
 Instrument : PSPCB  
 $\alpha$  : 03 15 30.70  
 $\delta$  : -55 16 48.1

Other ROSAT images :  
 None

XMM SSC  
 May 1 22:10:27 2019