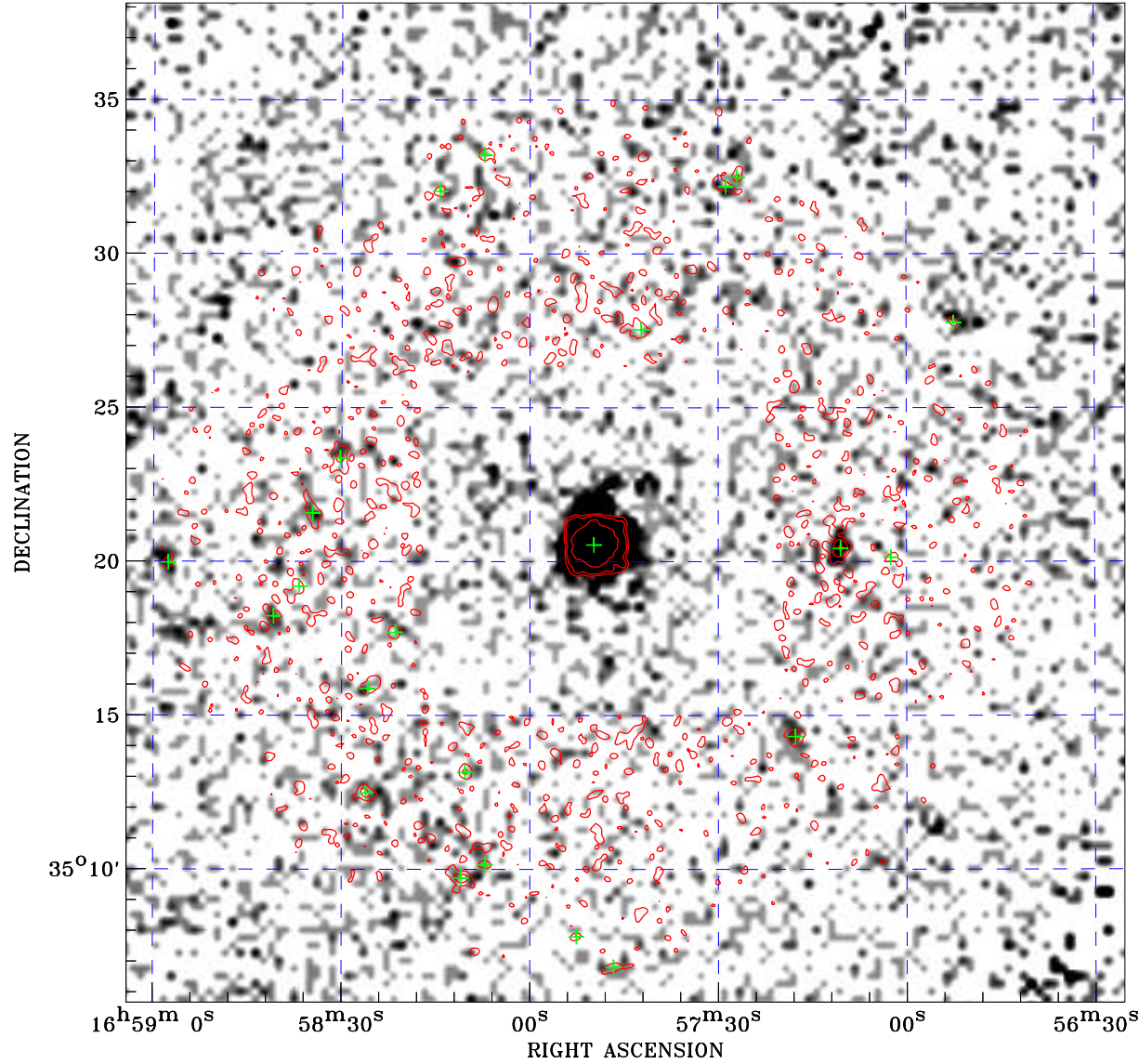


PDF XMM ROSAT image ACDS V10.0



ROSAT image gray scale (Log) :

$\langle 8.528\text{E-}05$ $\rangle 6.876\text{E-}04$

(counts s⁻¹)

⊙ Epic image contour
levels at 2, 7 and 30 σ

+ Detected Epic sources

Principal Investigator :
Dr Albert Brinkman

XMM target name :
Her X-1

Observation ID :
0111061601

Epic image :
 α : 16 57 44.79
 δ : +35 21 55.4
Energy band : 0.2–12.0 keV
MOS1 : 7755 s
MOS2 : 8014 s
PN : 0 s

Contour levels (counts) :
2 σ :5.569E-01 7 σ :1.426E+00
30 σ 5.425E+00

Nearest ROSAT image
from Epic image center :
Observation : 141889p
Instrument : PSPCB
 α : 16 58 05.12
 δ : +35 17 23.7

Other ROSAT images :
None

XMM SSC
May 3 15:16:27 2019