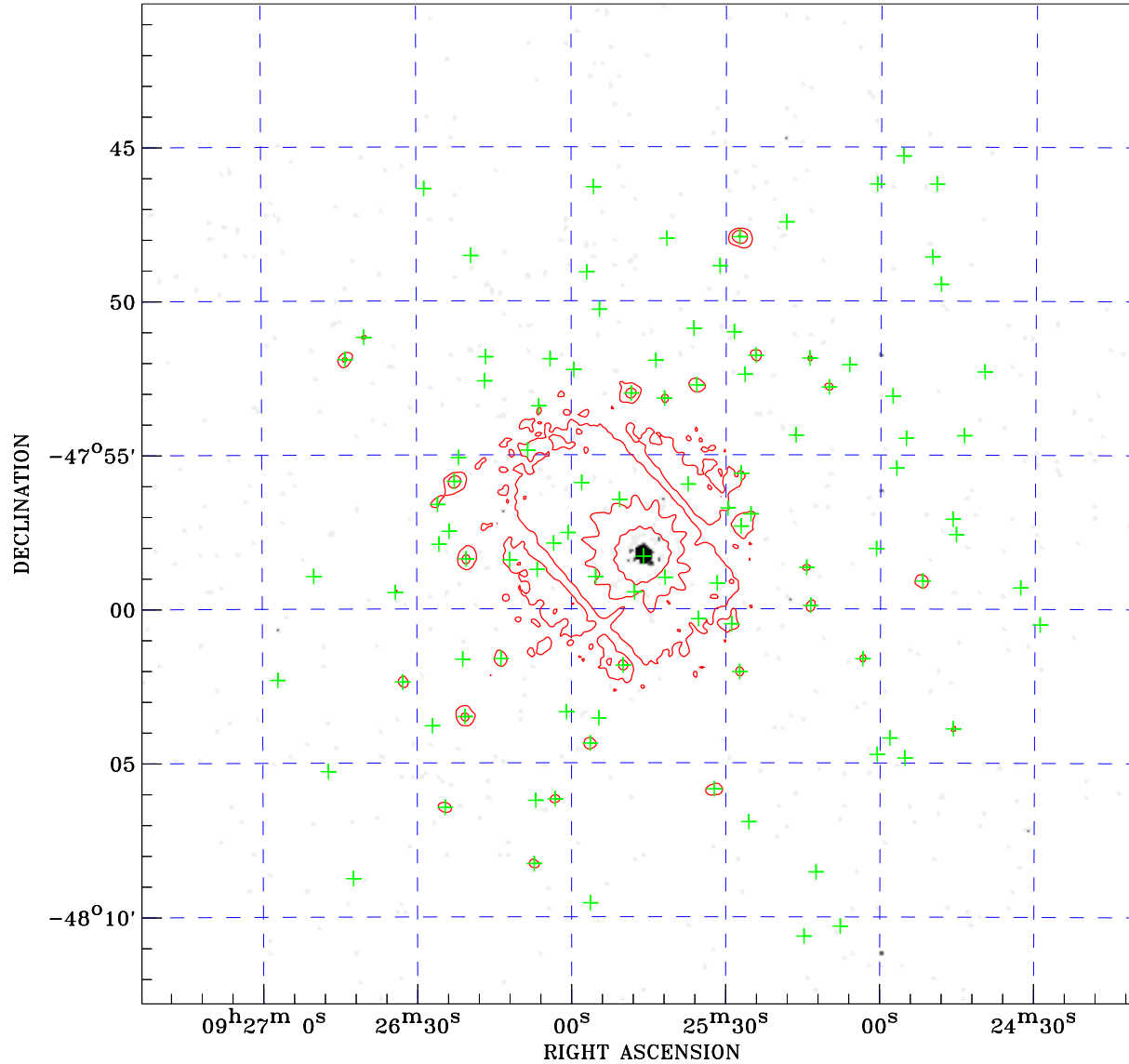


# PDF XMM ROSAT image ACDS V10.0



Principal Investigator :  
Dr Michael Watson

XMM target name :  
RX J0925.7-4758

Observation ID :  
0111150201

Epic image :  
 $\alpha$  : 09 25 46.32  
 $\delta$  : -47 56 35.9  
Energy band : 0.2-12.0 keV  
MOS1 : 58107 s  
MOS2 : 57977 s  
PN : 54877 s

Contour levels (counts) :  
 $2\sigma$  :5.541E+00  $7\sigma$  :1.660E+01  
 $30\sigma$  6.747E+01

Nearest ROSAT image  
from Epic image center :  
Observation : 400411h  
Instrument : HRI  
 $\alpha$  : 09 25 55.14  
 $\delta$  : -47 59 48.2

Other ROSAT images :  
None

XMM SSC  
Apr 24 03:27:32 2019

ROSAT image gray scale (Log) :  
[Color bar showing gray scale from light to dark]  
< 5.420E-04 > 1.641E-03  
(counts s<sup>-1</sup>)

⊙ Epic image contour  
levels at 2, 7 and 30 $\sigma$

+ Detected Epic sources