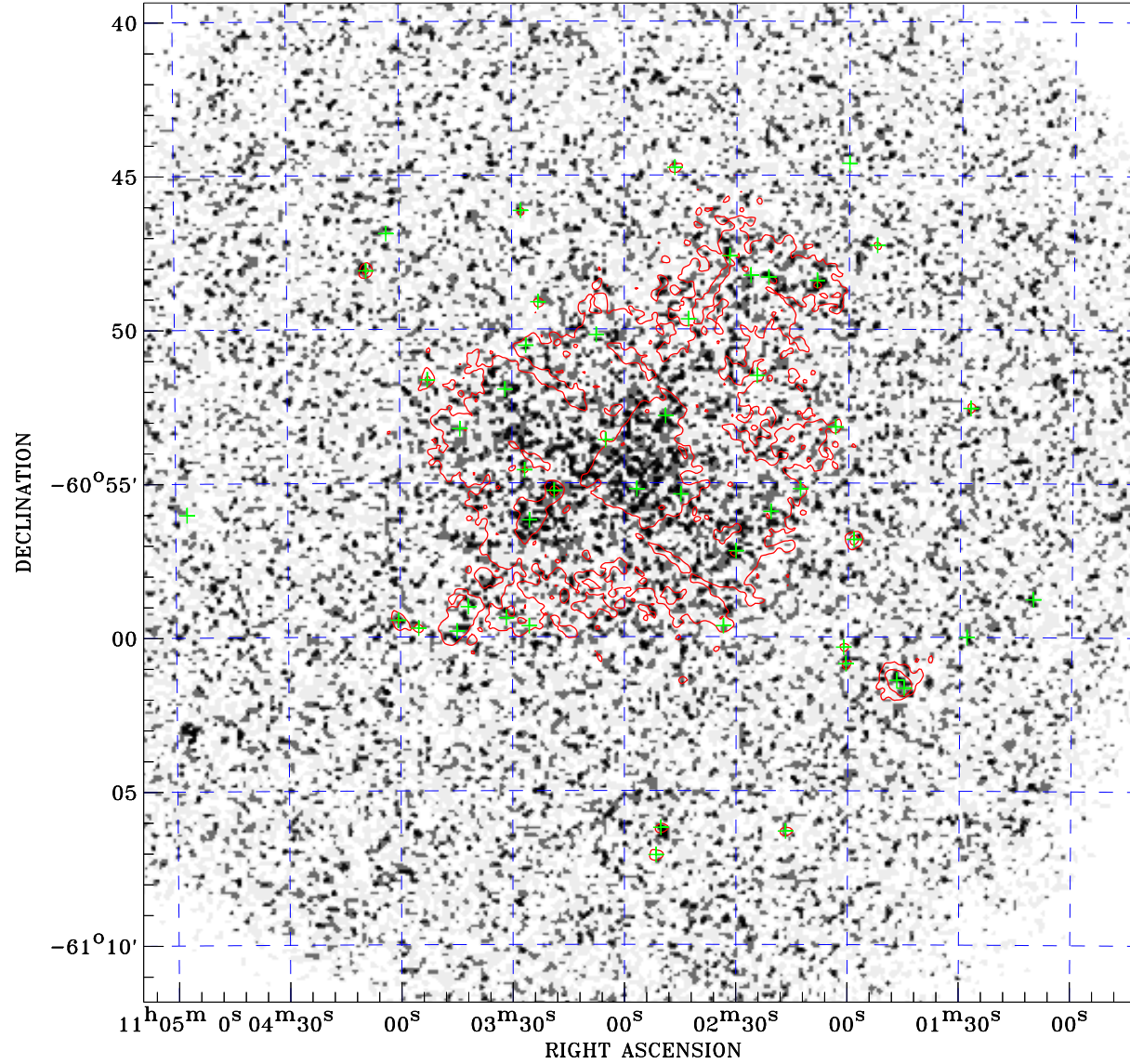


# PDF XMM ROSAT image ACDS V10.0



Principal Investigator :  
Dr Michael Watson

XMM target name :  
G290.1-0.8

Observation ID :  
0111210201

Epic image :  
 $\alpha$  : 11 02 54.93  
 $\delta$  : -60 55 38.7  
Energy band : 0.2-12.0 keV  
MOS1 : 10813 s  
MOS2 : 10813 s  
PN : 6909 s

Contour levels (counts) :  
2 $\sigma$  :2.001E+00 7 $\sigma$  :5.206E+00  
30 $\sigma$  :1.995E+01

Nearest ROSAT image  
from Epic image center :  
Observation : 500340h  
Instrument : HRI  
 $\alpha$  : 11 03 17.94  
 $\delta$  : -60 55 36.2

Other ROSAT images :  
None

XMM SSC  
May 1 16:12:09 2019

⊙ Epic image contour  
levels at 2, 7 and 30 $\sigma$

+ Detected Epic sources