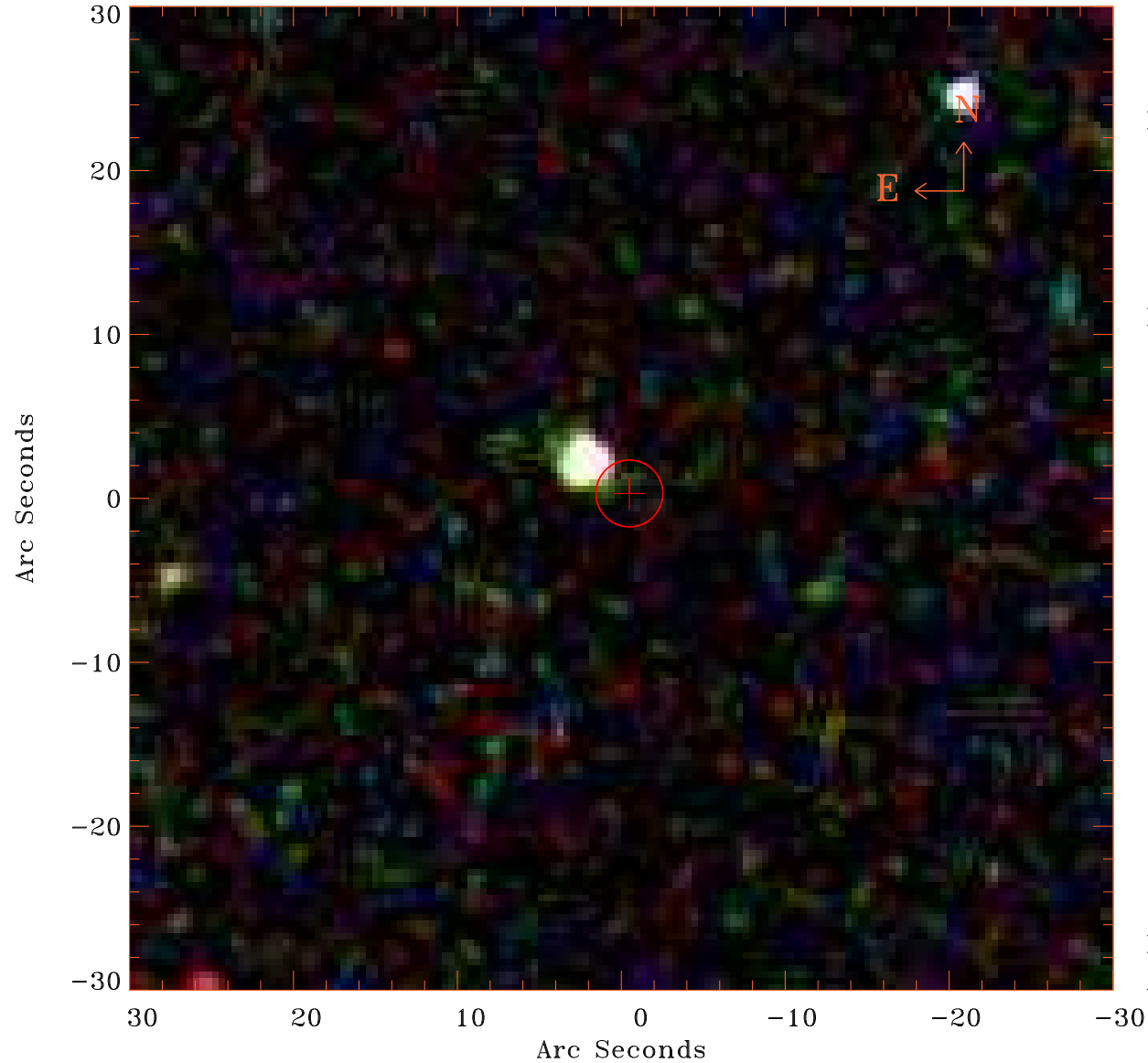


EPIC source finding chart V10.0



Principal Investigator :

Dr Albert Brinkman

XMM target name :

pil Ursae Majoris

OBS ID : 111400101

Source number : 6

X-ray coordinates :

α : 08 41 13.80

δ : +64 58 34.8

Center coordinates :

α : 08 41 13.82

δ : +64 58 34.9

Plate reference :

Origin : SDSS

Color coding :

i band ●

r band ●

g band ●

Error circle :

R_{90} (") : 2.0

XMM SSC

Apr 28 11:46:29 2019