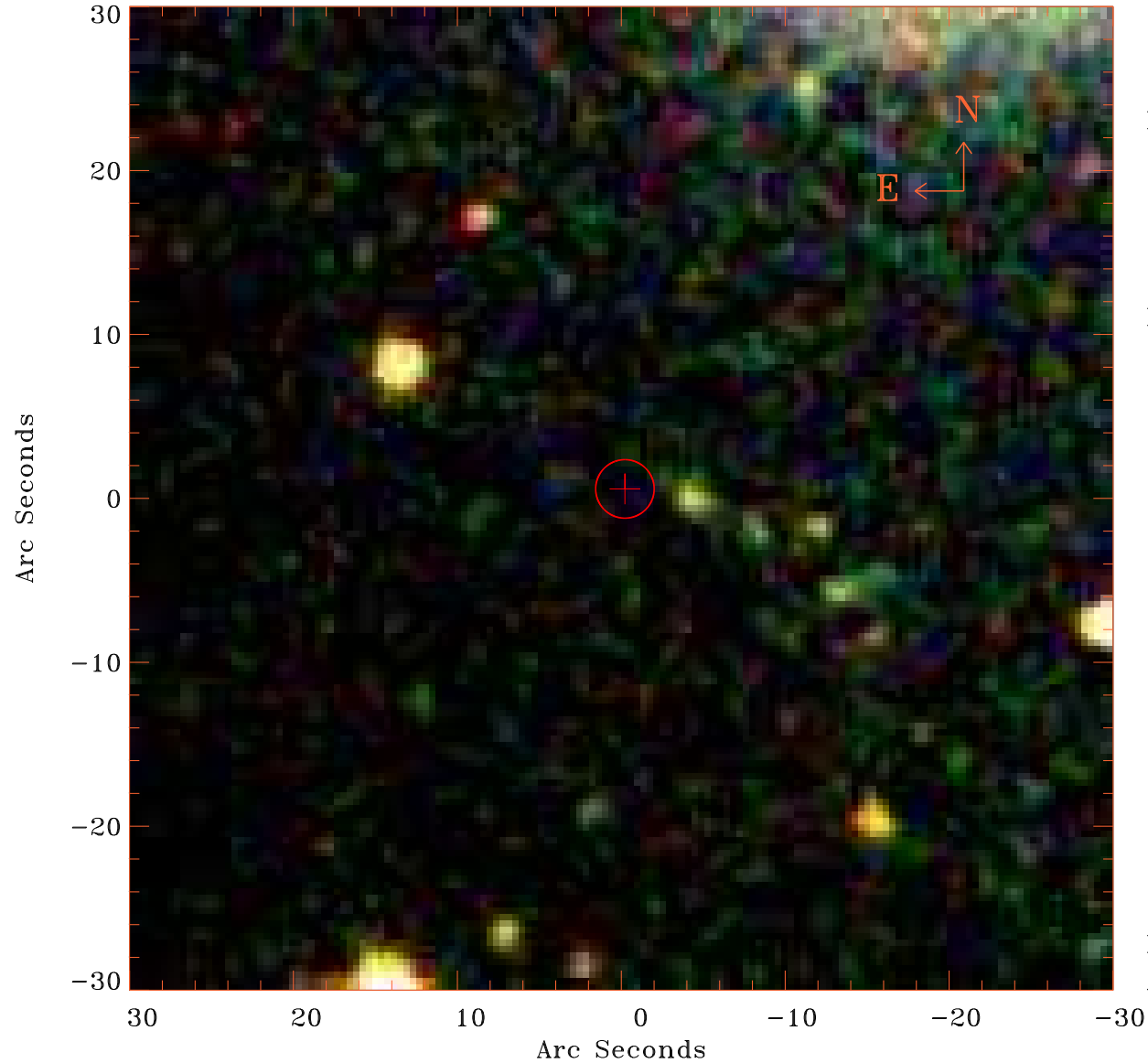


EPIC source finding chart V10.0



Principal Investigator :

Dr Albert Brinkman

XMM target name :

pil Ursae Majoris

OBS ID : 111400101

Source number : 17

X-ray coordinates :

α : 08 39 40.02

δ : +64 58 25.0

Center coordinates :

α : 08 39 39.99

δ : +64 58 24.8

Plate reference :

Origin : SDSS

Color coding :

i band ●

r band ●

g band ●

Error circle :

R_{90} (") : 1.8

XMM SSC

Apr 28 11:44:03 2019