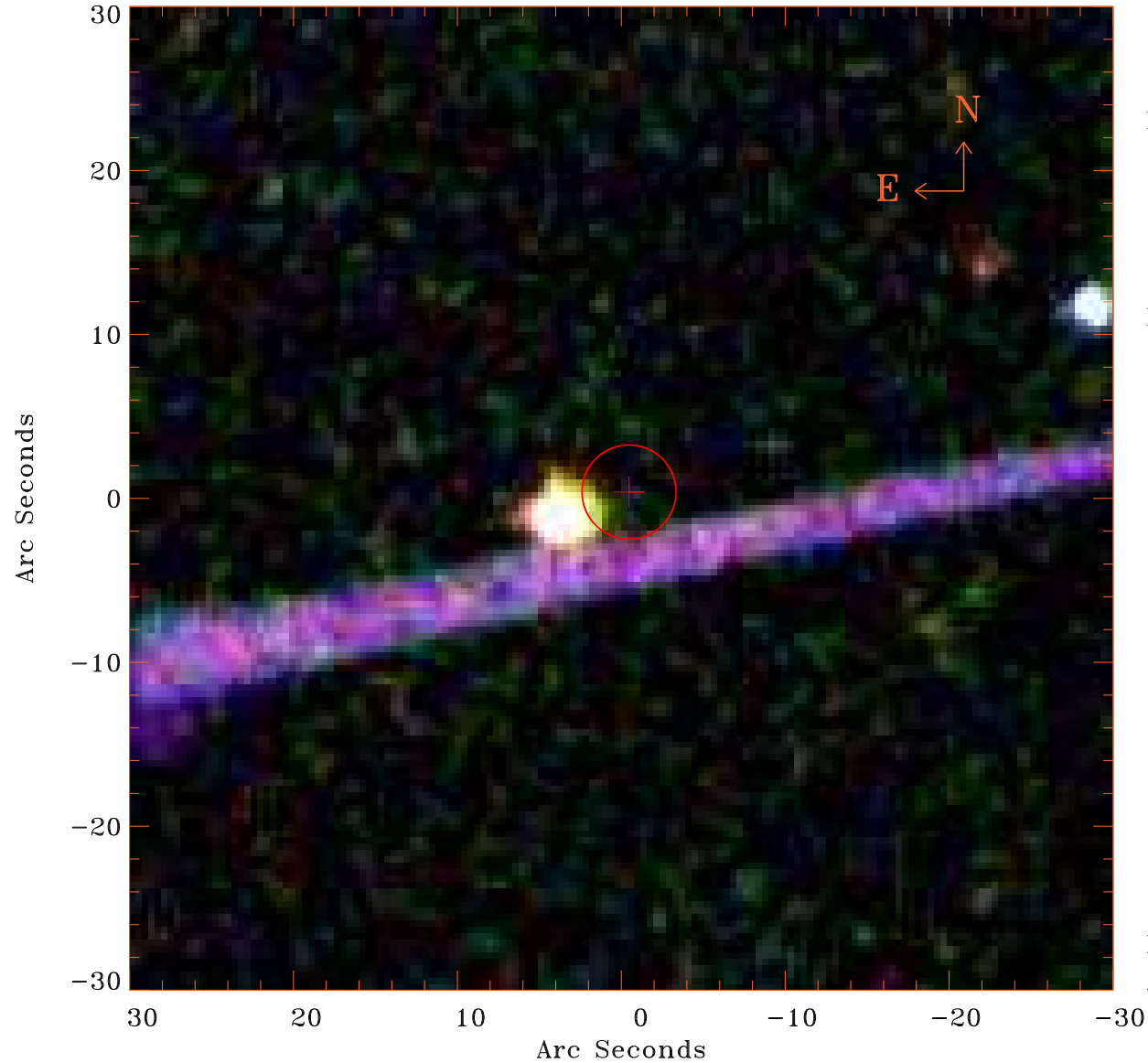


# EPIC source finding chart V10.0



Principal Investigator :

Dr Albert Brinkman

XMM target name :

pil Ursae Majoris

OBS ID : 111400101

Source number : 55

X-ray coordinates :

$\alpha$  : 08 38 48.63

$\delta$  : +64 52 37.3

Center coordinates :

$\alpha$  : 08 38 48.64

$\delta$  : +64 52 37.3

Plate reference :

Origin : SDSS

Color coding :

i band ●

r band ●

g band ●

Error circle :

$R_{90}$  (") : 2.9

XMM SSC

Apr 28 11:39:00 2019