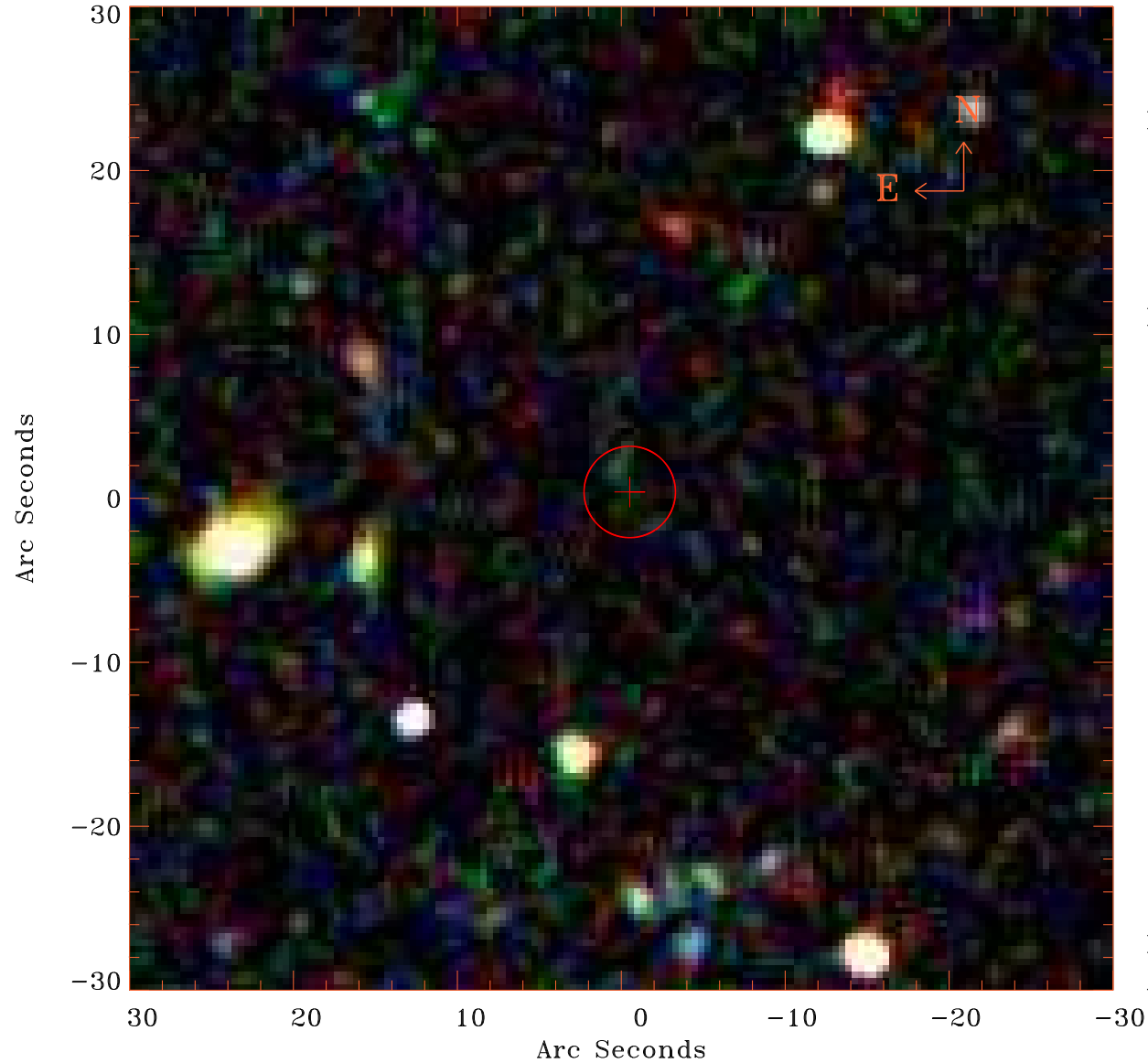


# EPIC source finding chart V10.0



Principal Investigator :

Dr Albert Brinkman

XMM target name :

pil Ursae Majoris

OBS ID : 111400101

Source number : 61

X-ray coordinates :

$\alpha$  : 08 37 40.77

$\delta$  : +64 59 06.4

Center coordinates :

$\alpha$  : 08 37 40.79

$\delta$  : +64 59 06.4

Plate reference :

Origin : SDSS

Color coding :

i band ●

r band ●

g band ●

Error circle :

$R_{90}$  (") : 2.8

XMM SSC

Apr 28 11:37:46 2019