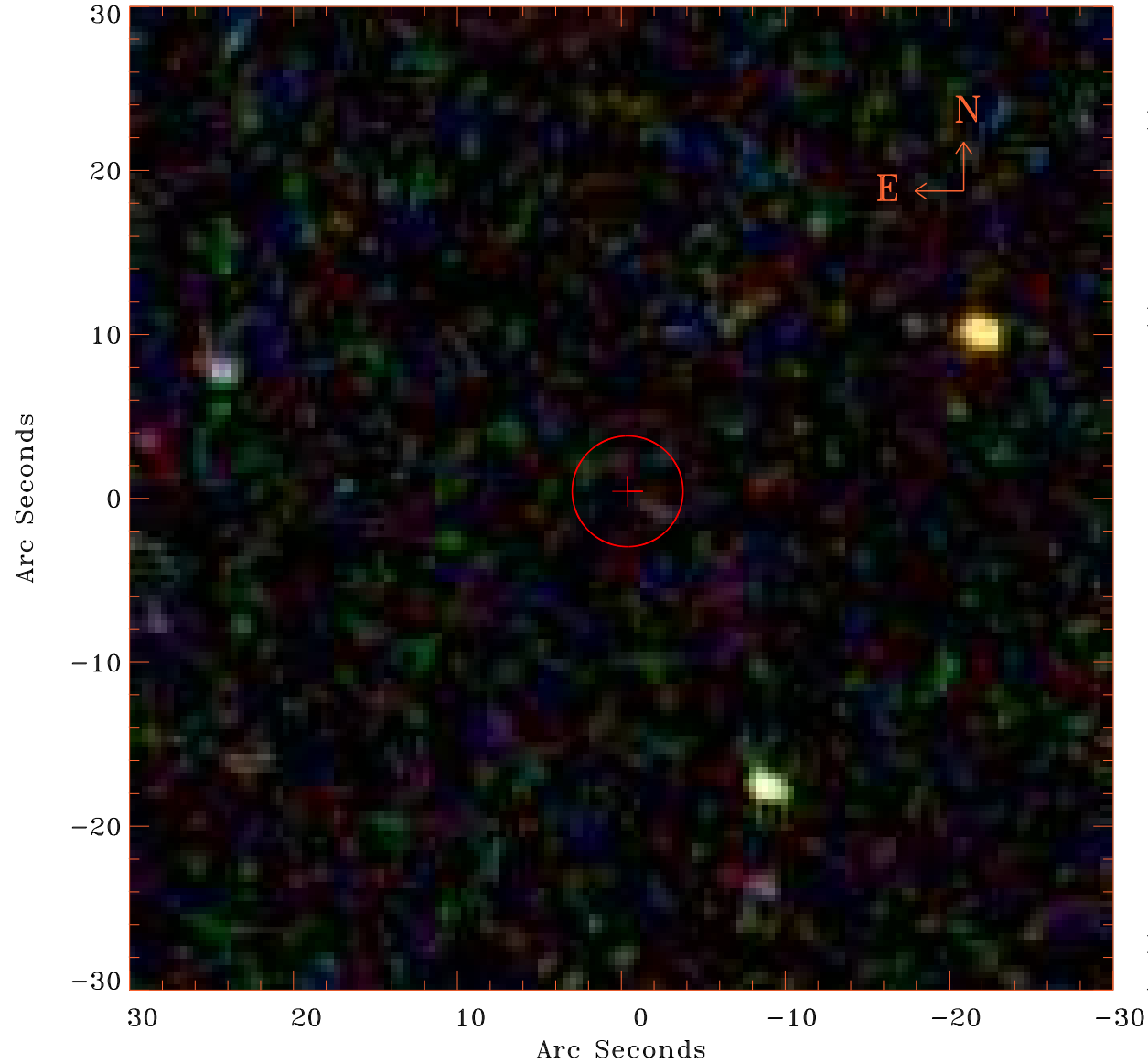


# EPIC source finding chart V10.0



Principal Investigator :

Dr Albert Brinkman

XMM target name :

pil Ursae Majoris

OBS ID : 111400101

Source number : 86

X-ray coordinates :

$\alpha$  : 08 40 30.27

$\delta$  : +64 57 03.6

Center coordinates :

$\alpha$  : 08 40 30.27

$\delta$  : +64 57 03.5

Plate reference :

Origin : SDSS

Color coding :

i band ●

r band ●

g band ●

Error circle :

$R_{90}$  (") : 3.4

XMM SSC

Apr 28 11:45:26 2019