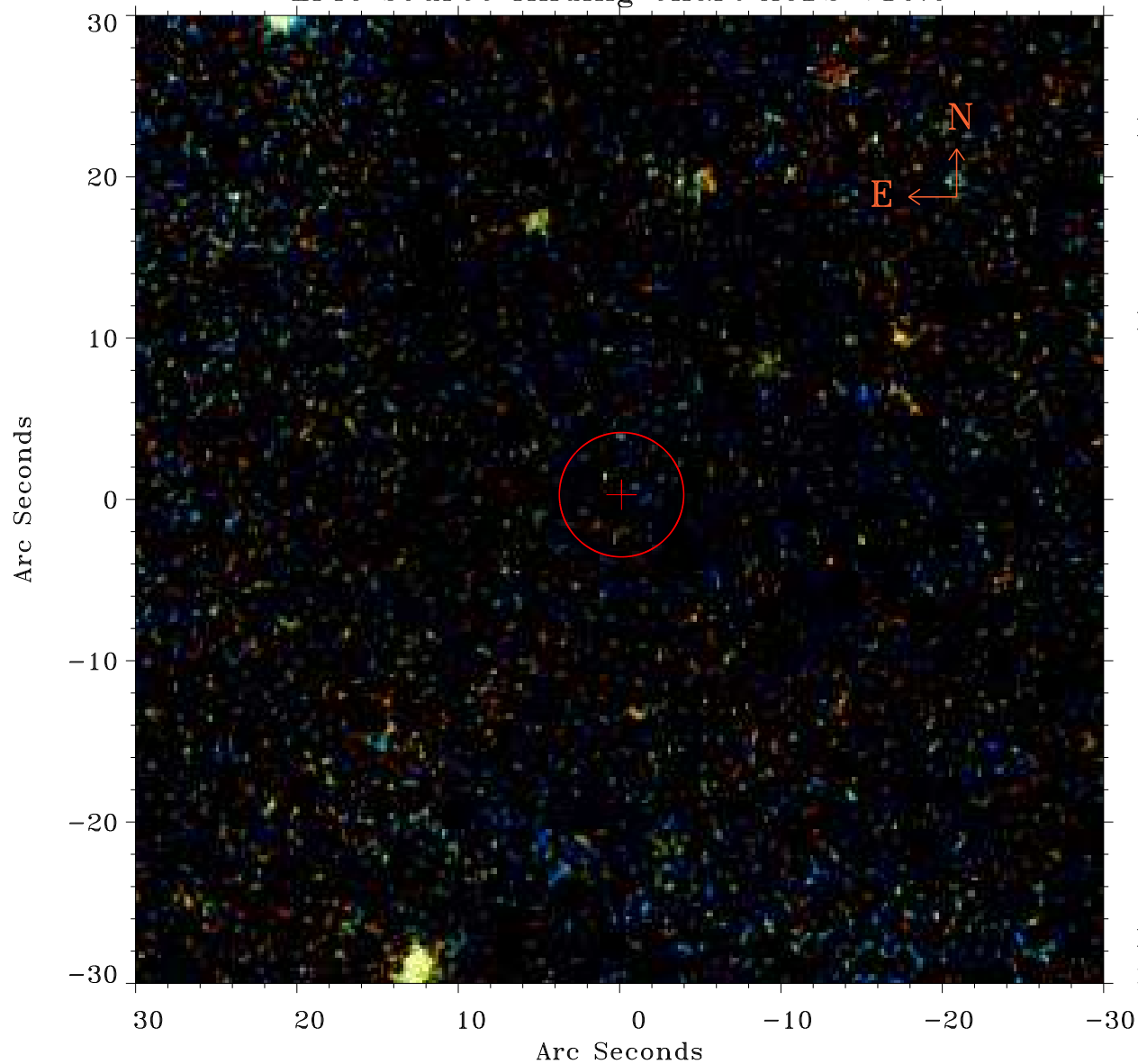


EPIC source finding chart ACDS V10.0



Principal Investigator :

Dr Albert Brinkman

XMM target name :

Sigma2 CrB

OBS ID : 111470101

Source number : 4

X-ray coordinates :

α : 16 15 15.74

δ : +33 51 31.4

Center coordinates :

α : 16 15 15.74

δ : +33 51 31.3

Plate reference :

Origin : PanSTARRS-DR1

Color coding :

z band ●

(z+g)/2 ●

g band ●

Error:

R90 : 3.8 arsec

XMM SSC

May 3 08:03:15 2019