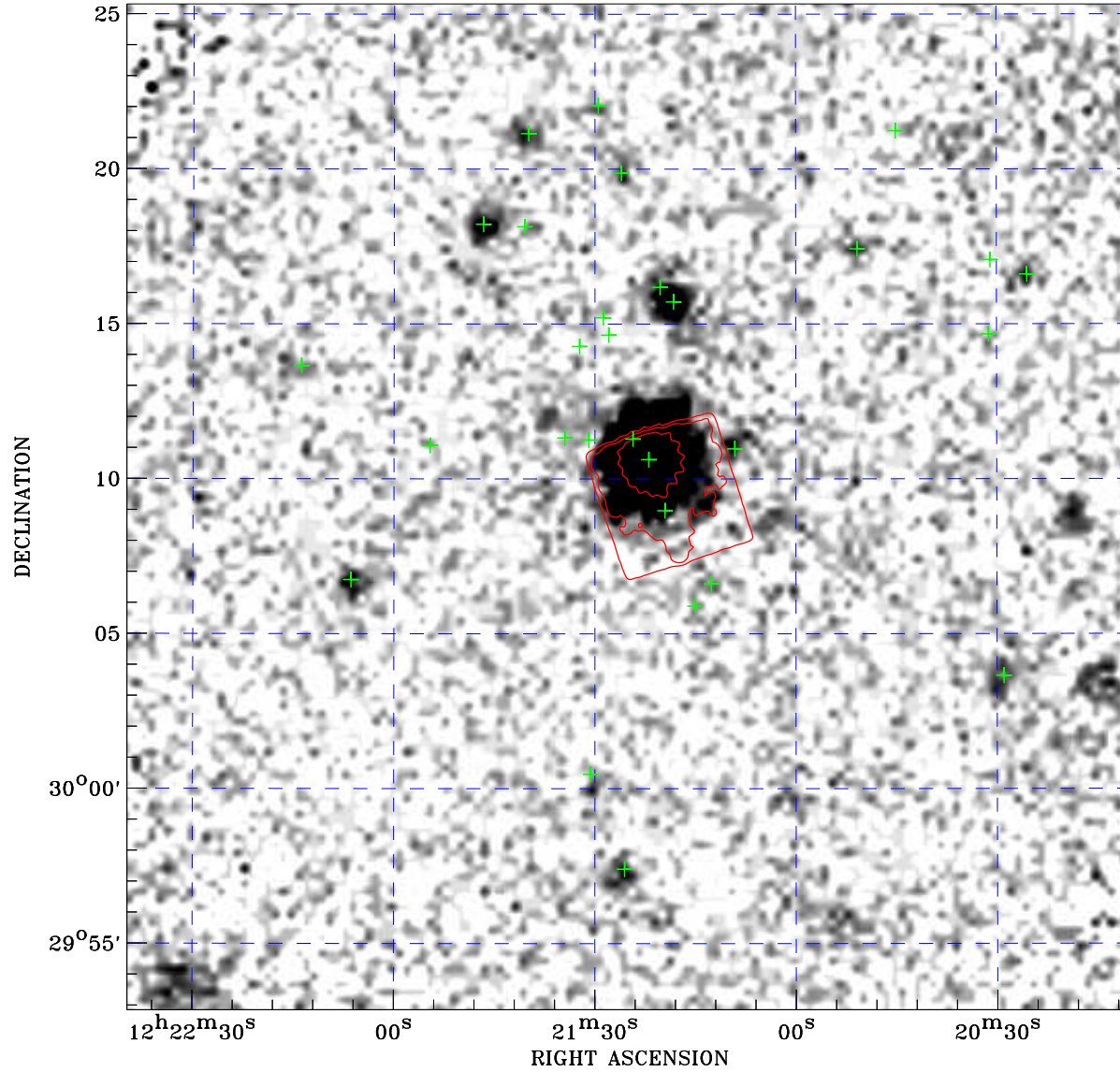



# PDF XMM ROSAT image ACDS V10.0



ROSAT image gray scale (Log) :  
  
 < 7.862E-05 > 6.874E-04  
 (counts s<sup>-1</sup>)

⊙ Epic image contour  
 levels at 2, 7 and 30σ

+ Detected Epic sources

Principal Investigator :  
 Dr Bert Brinkman

XMM target name :  
 1H1219+301

Observation ID :  
 0111840101

Epic image :  
 $\alpha$  : 12 21 24.78  
 $\delta$  : +30 09 06.1  
 Energy band : 0.2–12.0 keV  
 MOS1 : 8323 s  
 MOS2 : 8304 s  
 PN : 27657 s

Contour levels (counts) :  
 2σ :6.703E+00 7σ :2.319E+01  
 30σ :9.903E+01

Nearest ROSAT image  
 from Epic image center :  
 Observation : 701056p  
 Instrument : PSPCB  
 $\alpha$  : 12 21 35.49  
 $\delta$  : +30 07 47.7

Other ROSAT images :  
 None

XMM SSC  
 May 3 04:15:52 2019