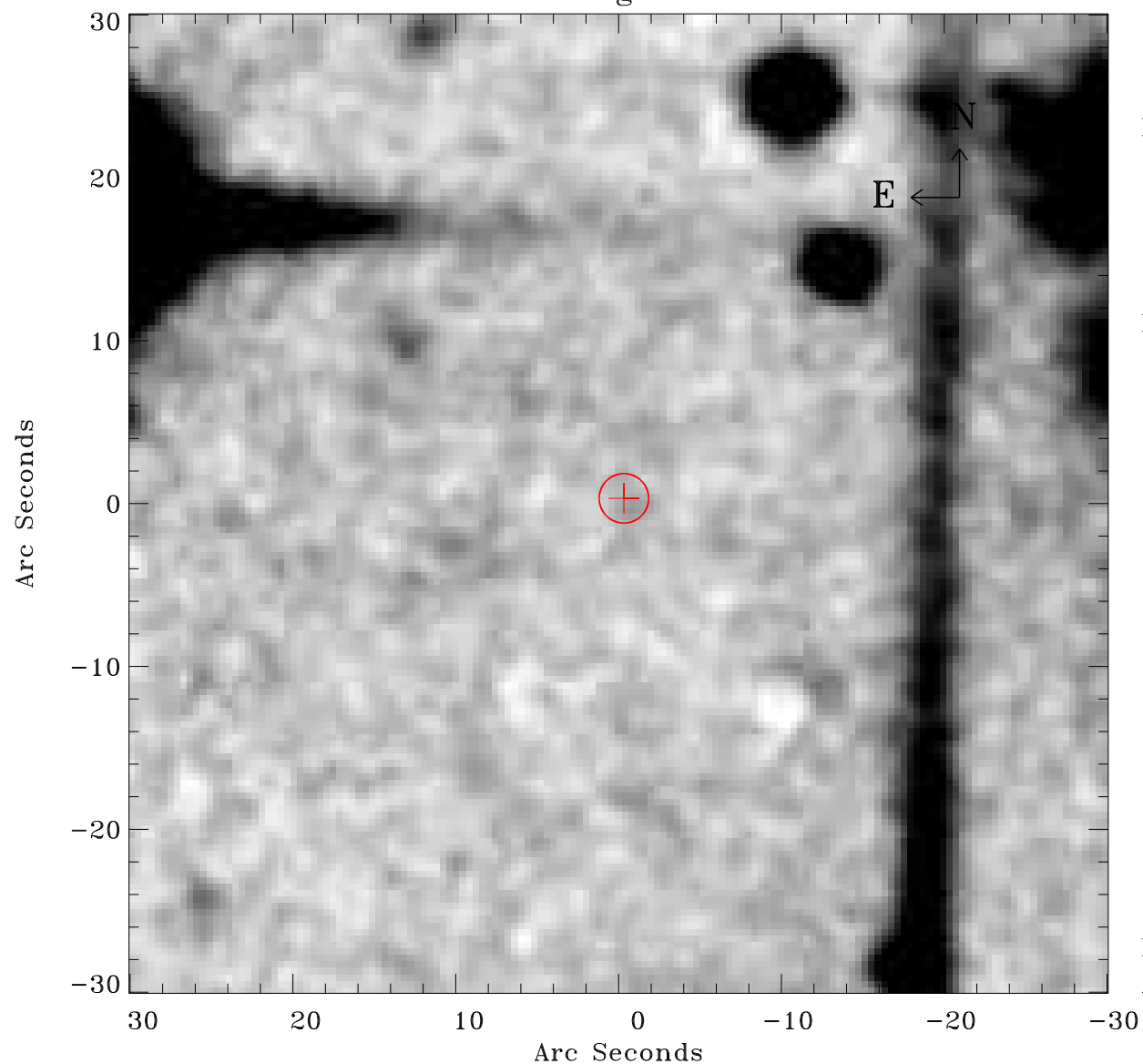


# EPIC source finding chart ACDS V10.0



Principal Investigator :

Dr Martin Turner

XMM target name :

NGC5408

OBS ID : 112291201

Source number : 10

X-ray coordinates :

$\alpha$  : 14 03 28.93

$\delta$  : -41 22 50.5

Center coordinates :

$\alpha$  : 14 03 28.92

$\delta$  : -41 22 50.4

Plate reference :

Origin : CDS HIPs Network

Plate : MAMA srcj

Pixel : 0.40 "/pix

Error circle :

$R_{90}$  (") : 1.5

XMM SSC

Apr 17 12:38:57 2019