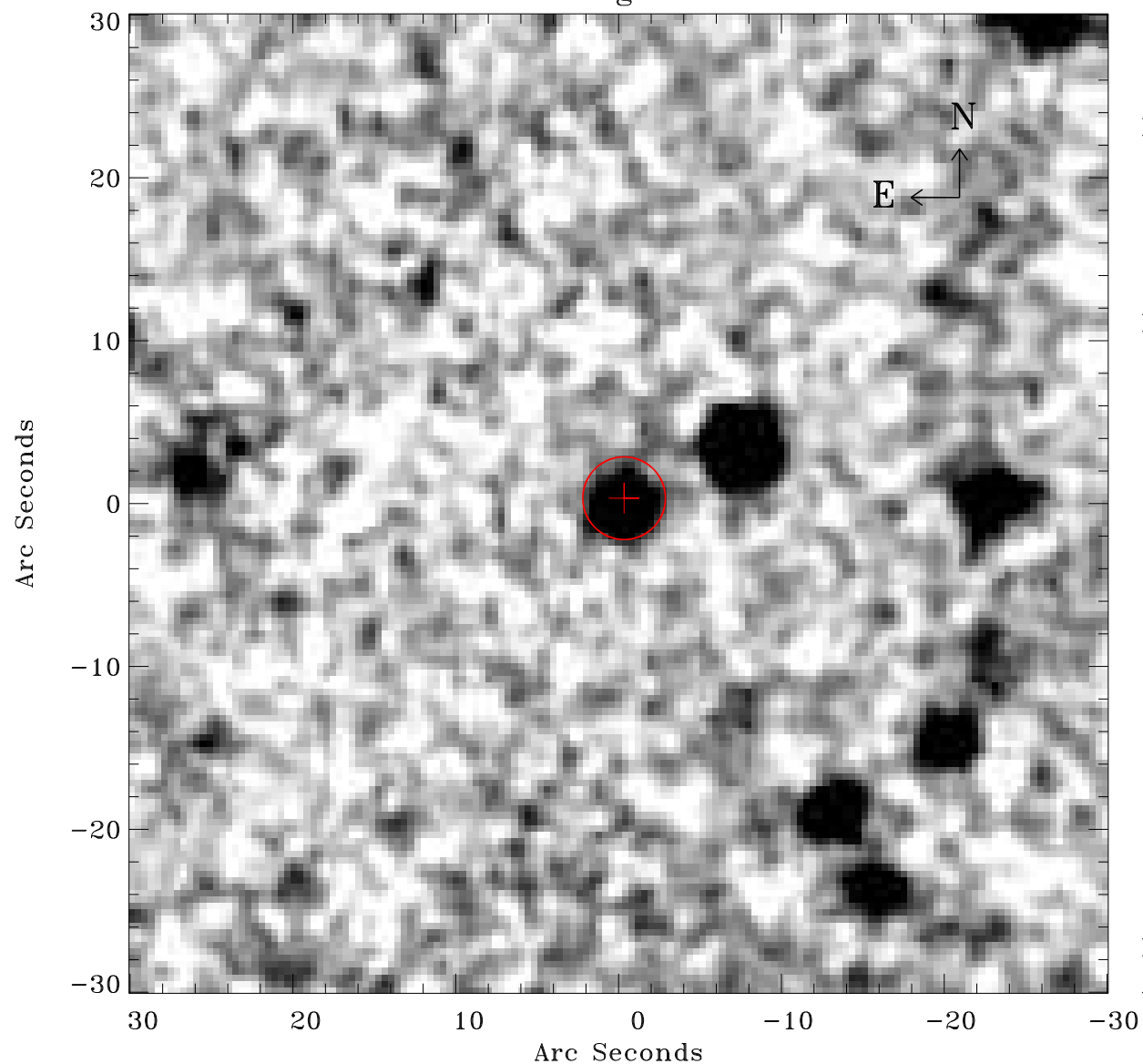


# EPIC source finding chart ACDS V10.0



Principal Investigator :

Dr Martin Turner

XMM target name :

NGC5408

OBS ID : 112291201

Source number : 17

X-ray coordinates :

$\alpha$  : 14 03 30.46

$\delta$  : -41 17 26.7

Center coordinates :

$\alpha$  : 14 03 30.45

$\delta$  : -41 17 26.7

Plate reference :

Origin : CDS HIPs Network

Plate : MAMA srcj

Pixel : 0.40 "/pix

Error circle :

$R_{90}$  (") : 2.5

XMM SSC

Apr 17 12:39:00 2019