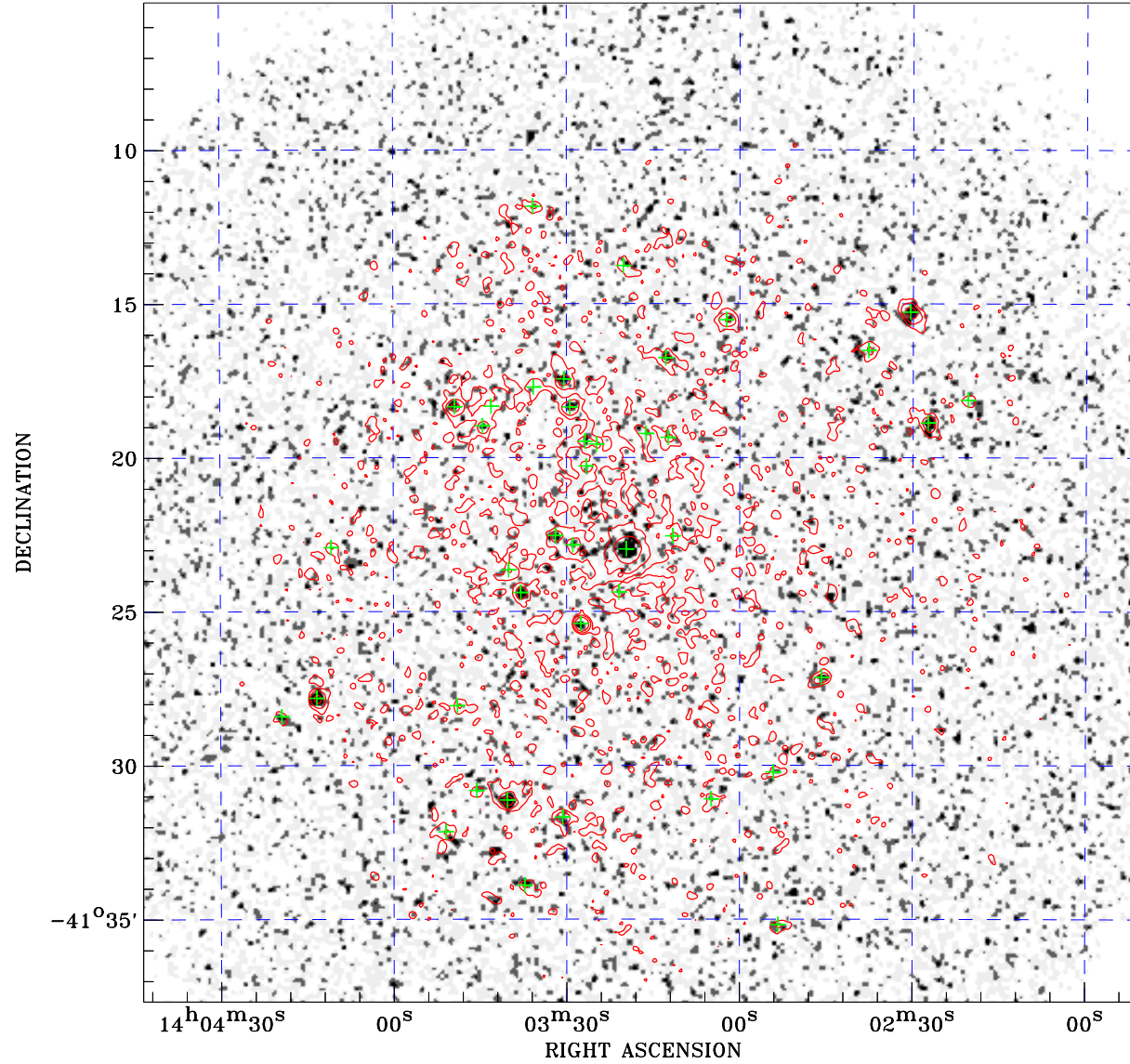


PDF XMM ROSAT image ACDS V10.0



ROSAT image gray scale (Log) :

$\langle 7.397\text{E-}05$ $\rangle 2.314\text{E-}04$

(counts s⁻¹)

⊙ Epic image contour
levels at 2, 7 and 30 σ

+ Detected Epic sources

Principal Investigator :
Dr Martin Turner

XMM target name :
NGC5408

Observation ID :
0112291201

Epic image :

α : 14 03 16.71
 δ : -41 21 27.9

Energy band : 0.2–12.0 keV

MOS1 : 4365 s
MOS2 : 4365 s
PN : 3240 s

Contour levels (counts) :
2 σ :5.012E-01 7 σ :1.288E+00
30 σ 4.906E+00

Nearest ROSAT image
from Epic image center :
Observation : 600376h
Instrument : HRI
 α : 14 03 27.71
 δ : -41 24 24.2

Other ROSAT images :
None

XMM SSC
Apr 17 12:25:09 2019