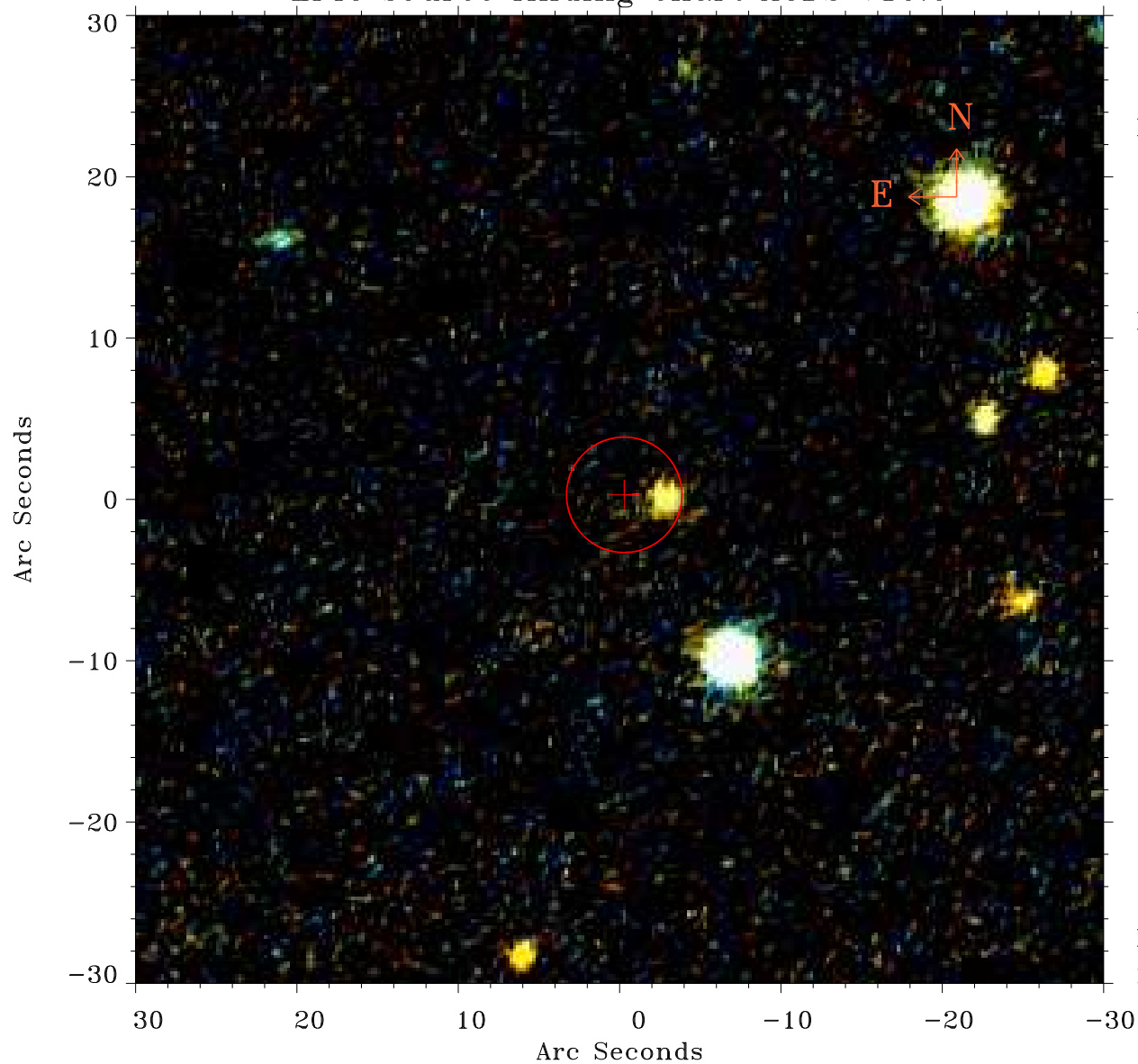


# EPIC source finding chart ACDS V10.0



Principal Investigator :

Dr Martin Turner

XMM target name :

NGC 6552

OBS ID : 112310801

Source number : 15

X-ray coordinates :

$\alpha$  : 18 00 36.41

$\delta$  : +66 25 24.4

Center coordinates :

$\alpha$  : 18 00 36.42

$\delta$  : +66 25 24.3

Plate reference :

Origin : PanSTARRS-DR1

Color coding :

z band ●

(z+g)/2 ●

g band ●

Error:

R90 : 3.6 arcsec

XMM SSC

May 3 15:51:34 2019