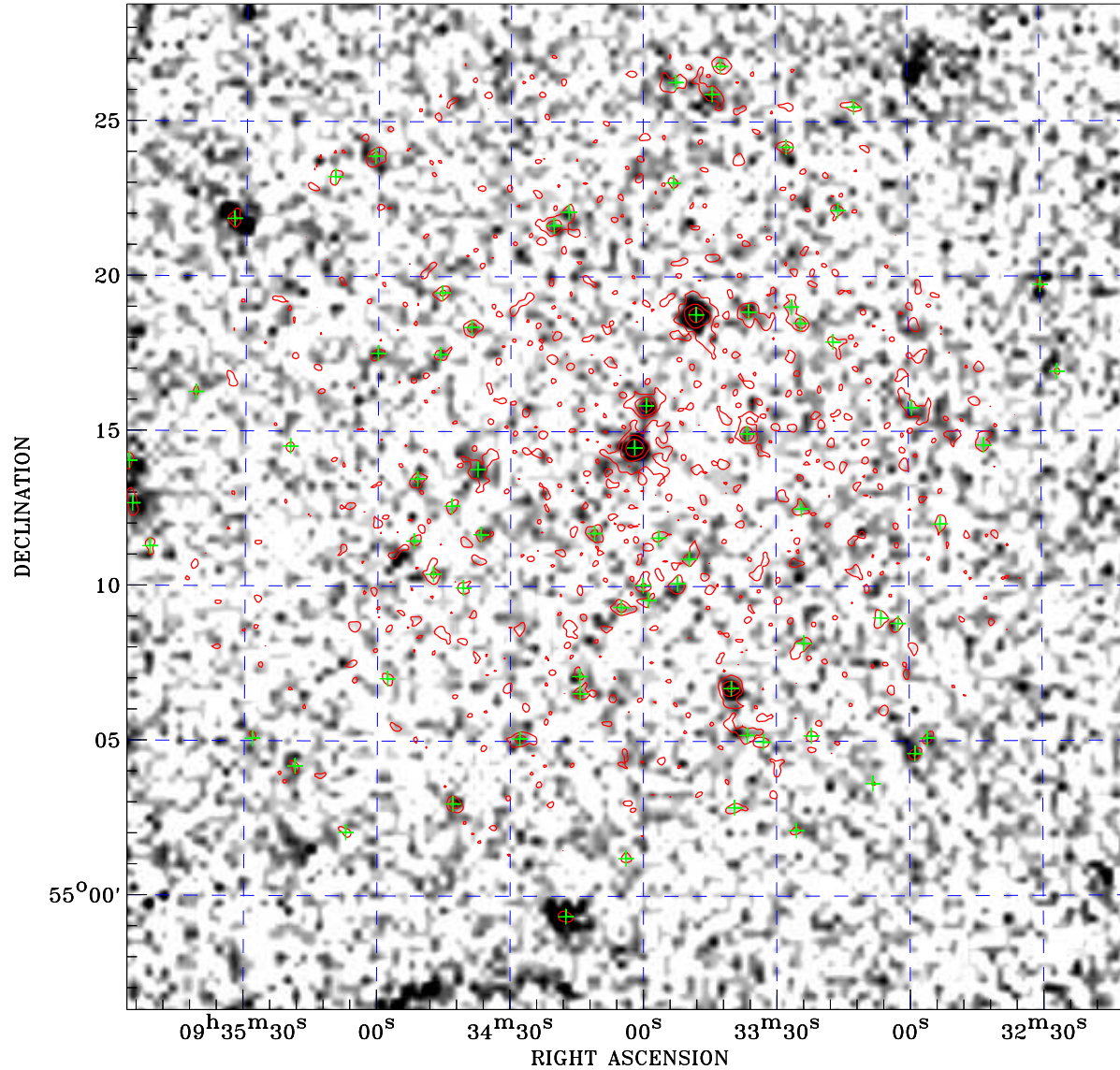



# PDF XMM ROSAT image ACDS V10.0



ROSAT image gray scale (Log) :  
  
 $\langle 9.187\text{E-}05$   $\rangle 3.899\text{E-}04$   
 (counts s<sup>-1</sup>)

⊙ Epic image contour  
 levels at 2, 7 and 30 $\sigma$

+ Detected Epic sources

Principal Investigator :  
 Dr Michael Watson

XMM target name :  
 IZw18

Observation ID :  
 0112520201

Epic image :  
 $\alpha$  : 09 34 03.04  
 $\delta$  : +55 12 34.8  
 Energy band : 0.2–12.0 keV  
 MOS1 : 16970 s  
 MOS2 : 17337 s  
 PN : 10908 s

Contour levels (counts) :  
 2 $\sigma$  :1.005E+00 7 $\sigma$  :2.335E+00  
 30 $\sigma$  :8.450E+00

Nearest ROSAT image  
 from Epic image center :  
 Observation : 600165p  
 Instrument : PSPCB  
 $\alpha$  : 09 34 23.42  
 $\delta$  : +55 11 23.6

Other ROSAT images :  
 None

XMM SSC  
 Apr 30 15:14:20 2019