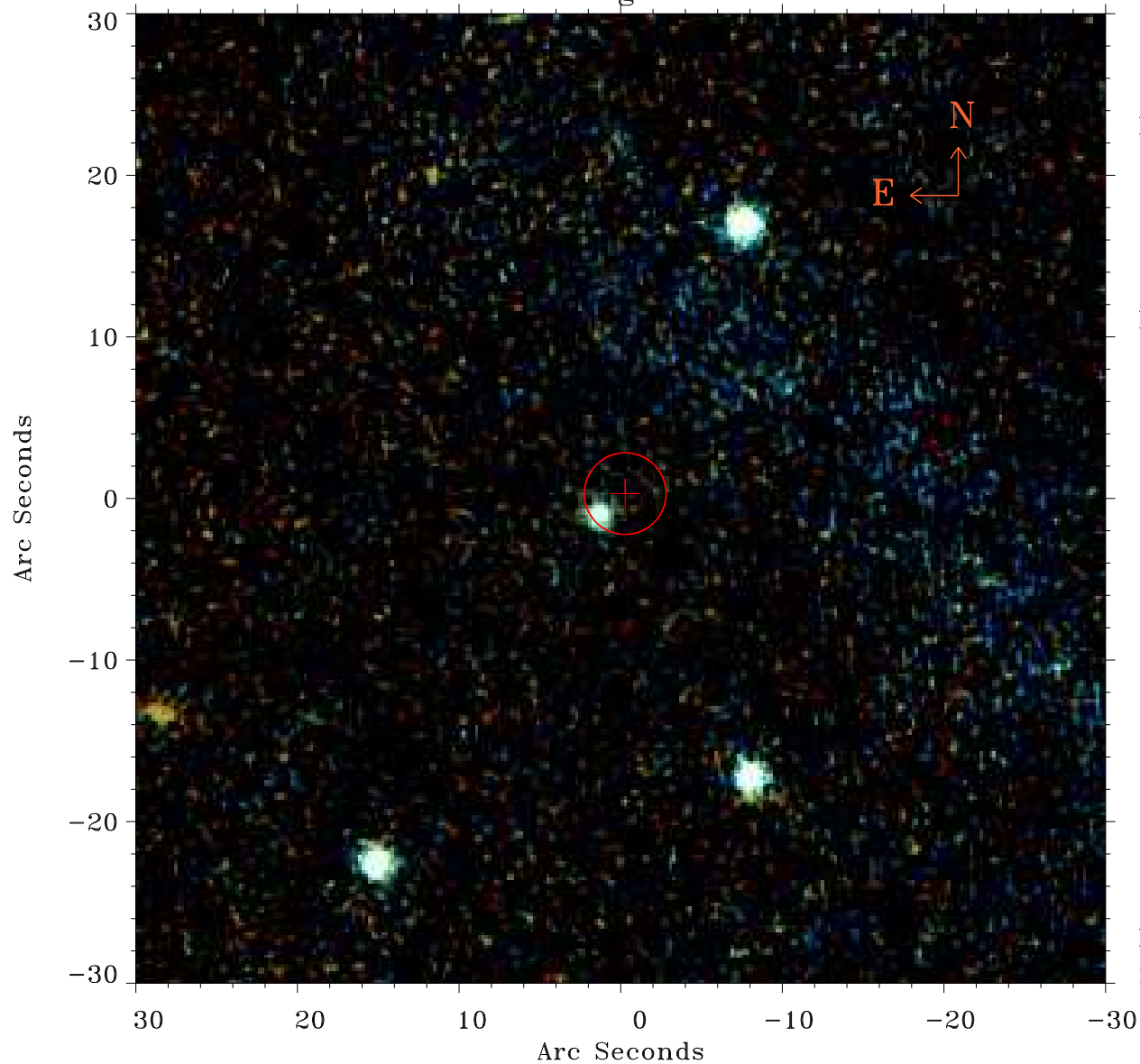


EPIC source finding chart ACDS V10.0



Principal Investigator :

Dr Michael Watson

XMM target name :

NGC 4395

OBS ID : 112522001

Source number : 5

X-ray coordinates :

α : 12 25 42.47

δ : +33 40 02.7

Center coordinates :

α : 12 25 42.48

δ : +33 40 02.6

Plate reference :

Origin : PanSTARRS-DR1

Color coding :

z band ●

(z+g)/2 ●

g band ●

Error:

R90 : 2.5 arcsec

XMM SSC

May 3 17:57:20 2019