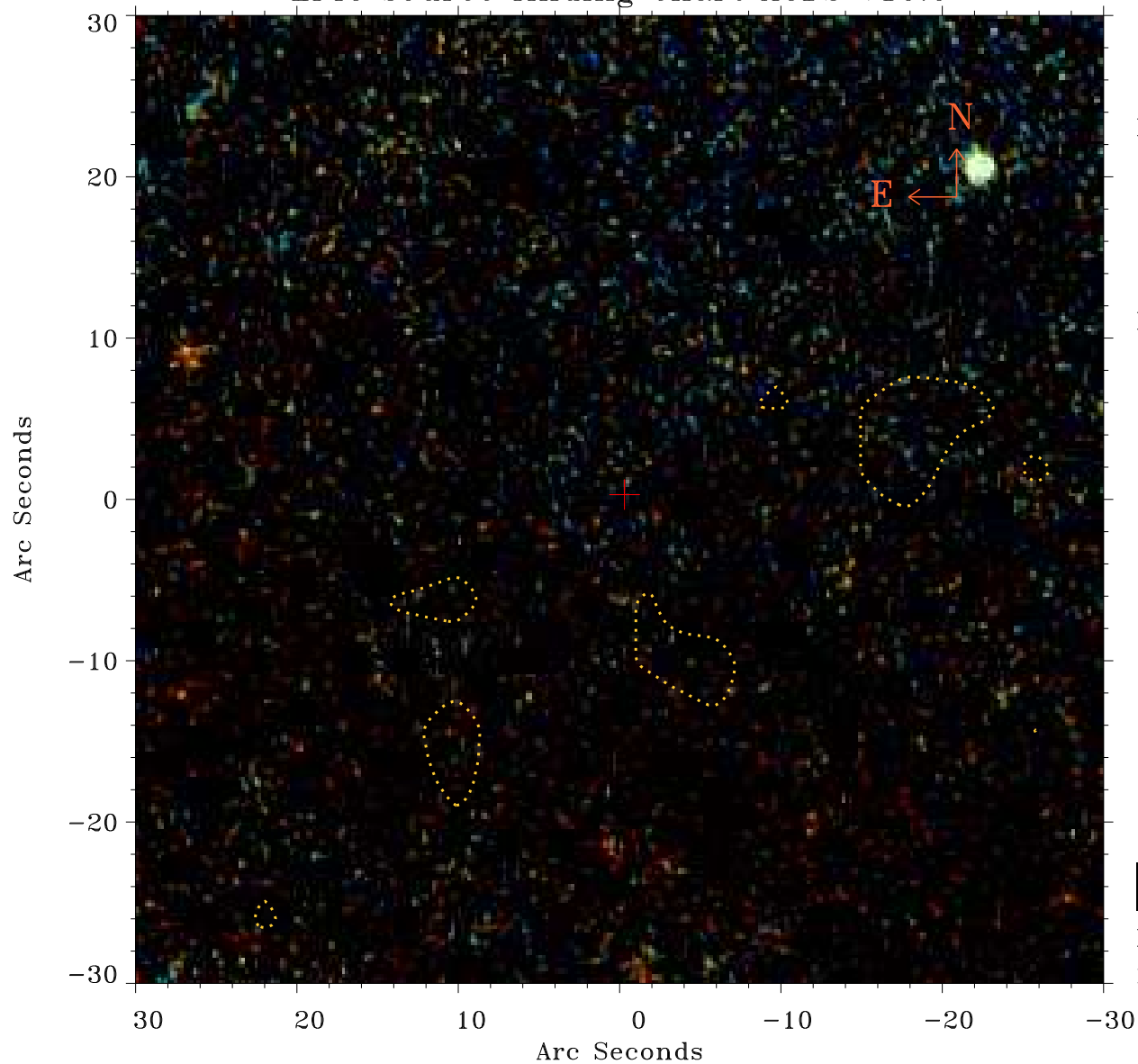


# EPIC source finding chart ACDS V10.0



Principal Investigator :

Dr Michael Watson

XMM target name :

NGC 4395

OBS ID : 112522001

Source number : 13

X-ray coordinates :

$\alpha$  : 12 26 27.78

$\delta$  : +33 28 51.4

Center coordinates :

$\alpha$  : 12 26 27.79

$\delta$  : +33 28 51.3

Plate reference :

Origin : PanSTARRS-DR1

Color coding :

z band ●

(z+g)/2 ●

g band ●

Contour levels (counts) :



XMM SSC

May 3 17:58:20 2019