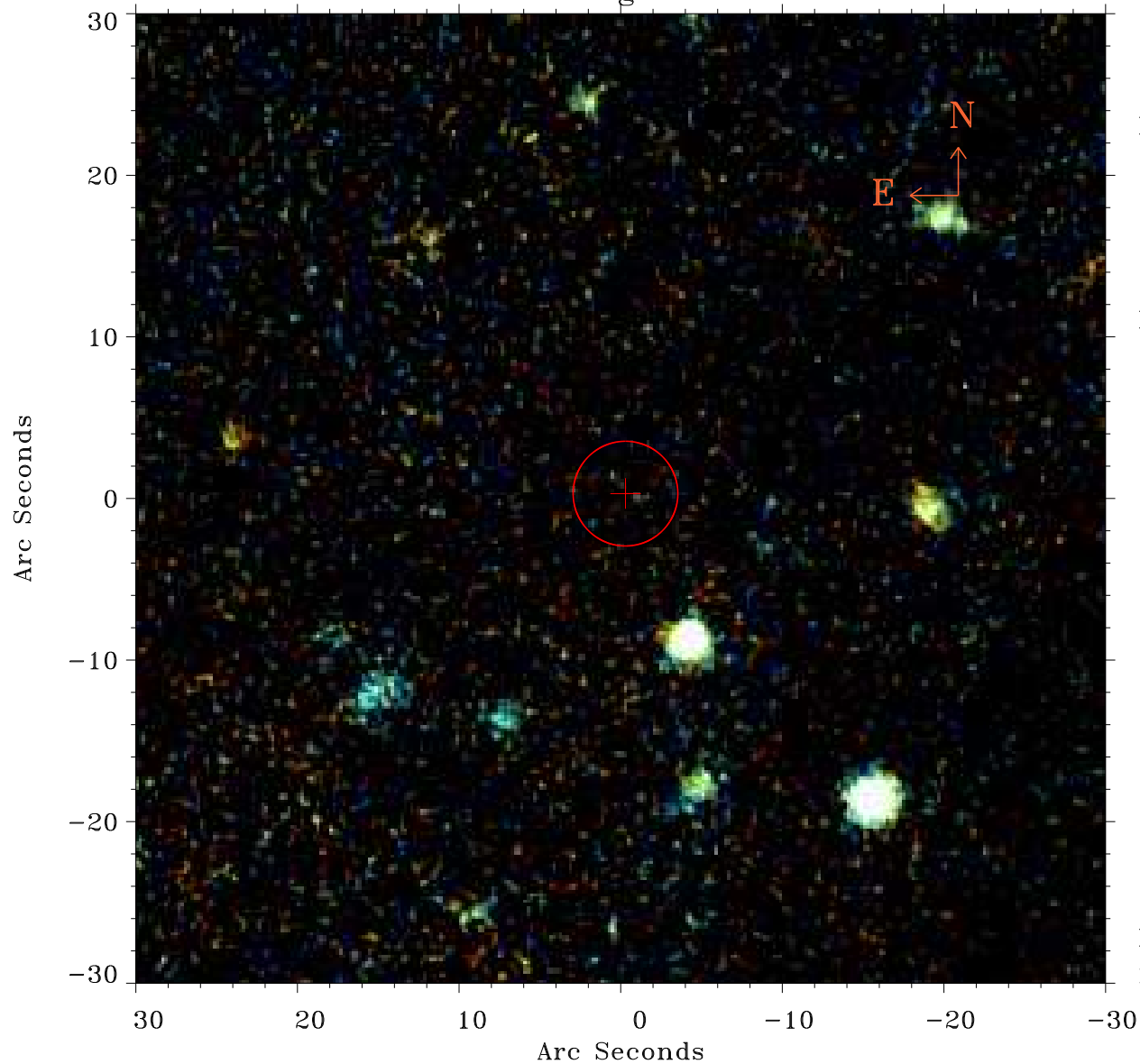


# EPIC source finding chart ACDS V10.0



Principal Investigator :

Dr Michael Watson

XMM target name :

NGC 4395

OBS ID : 112522001

Source number : 21

X-ray coordinates :

$\alpha$  : 12 26 22.76

$\delta$  : +33 42 15.1

Center coordinates :

$\alpha$  : 12 26 22.77

$\delta$  : +33 42 15.0

Plate reference :

Origin : PanSTARRS-DR1

Color coding :

z band ●

(z+g)/2 ●

g band ●

Error:

R90 : 3.2 arsec

XMM SSC

May 3 17:58:15 2019