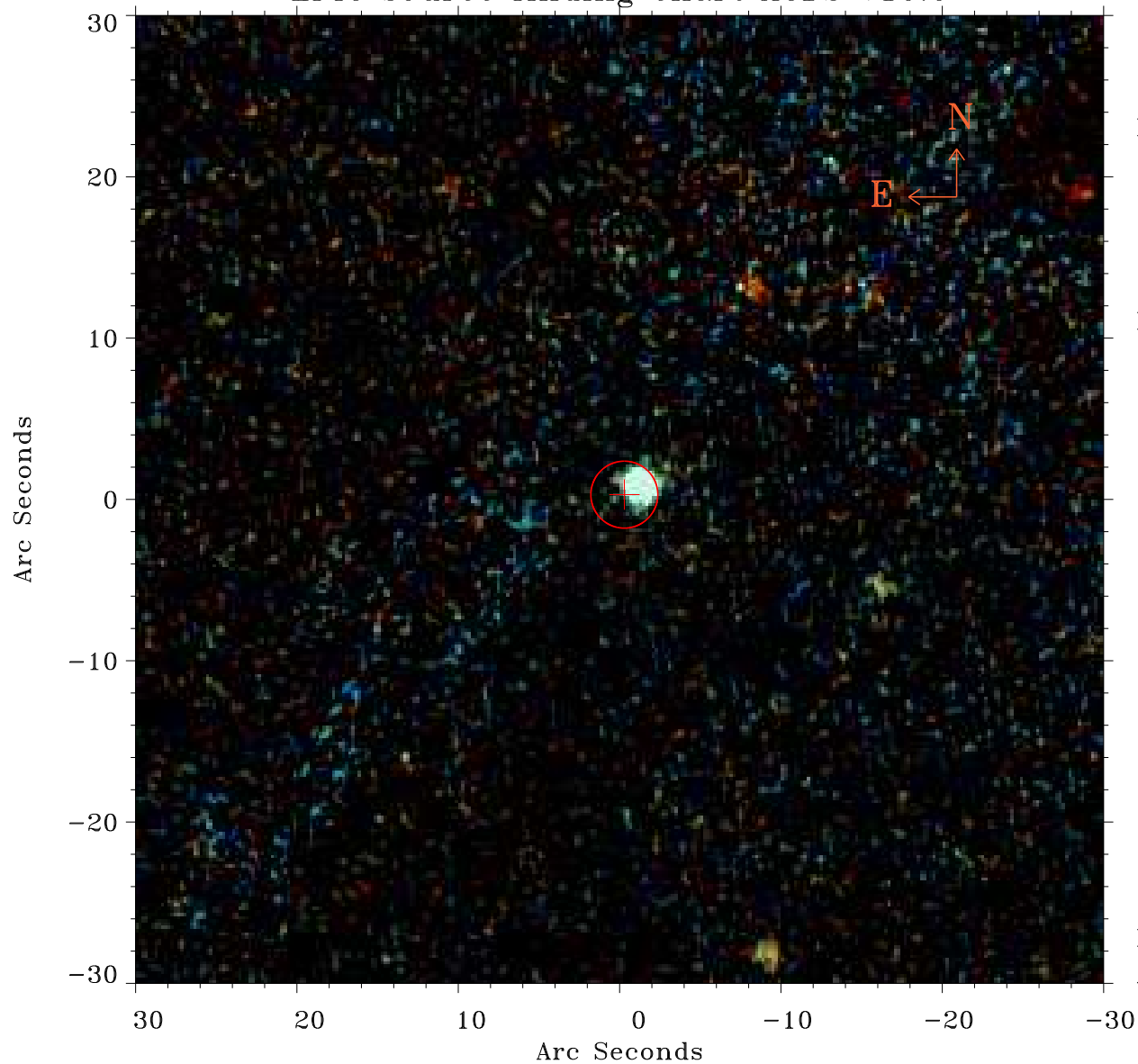


# EPIC source finding chart ACDS V10.0



Principal Investigator :

Dr Michael Watson

XMM target name :

NGC 4395

OBS ID : 112522701

Source number : 20

X-ray coordinates :

$\alpha$  : 12 26 27.11

$\delta$  : +33 21 47.1

Center coordinates :

$\alpha$  : 12 26 27.12

$\delta$  : +33 21 47.0

Plate reference :

Origin : PanSTARRS-DR1

Color coding :

z band ●

(z+g)/2 ●

g band ●

Error:

R90 : 2.1 arcsec

XMM SSC

Apr 20 21:26:02 2019