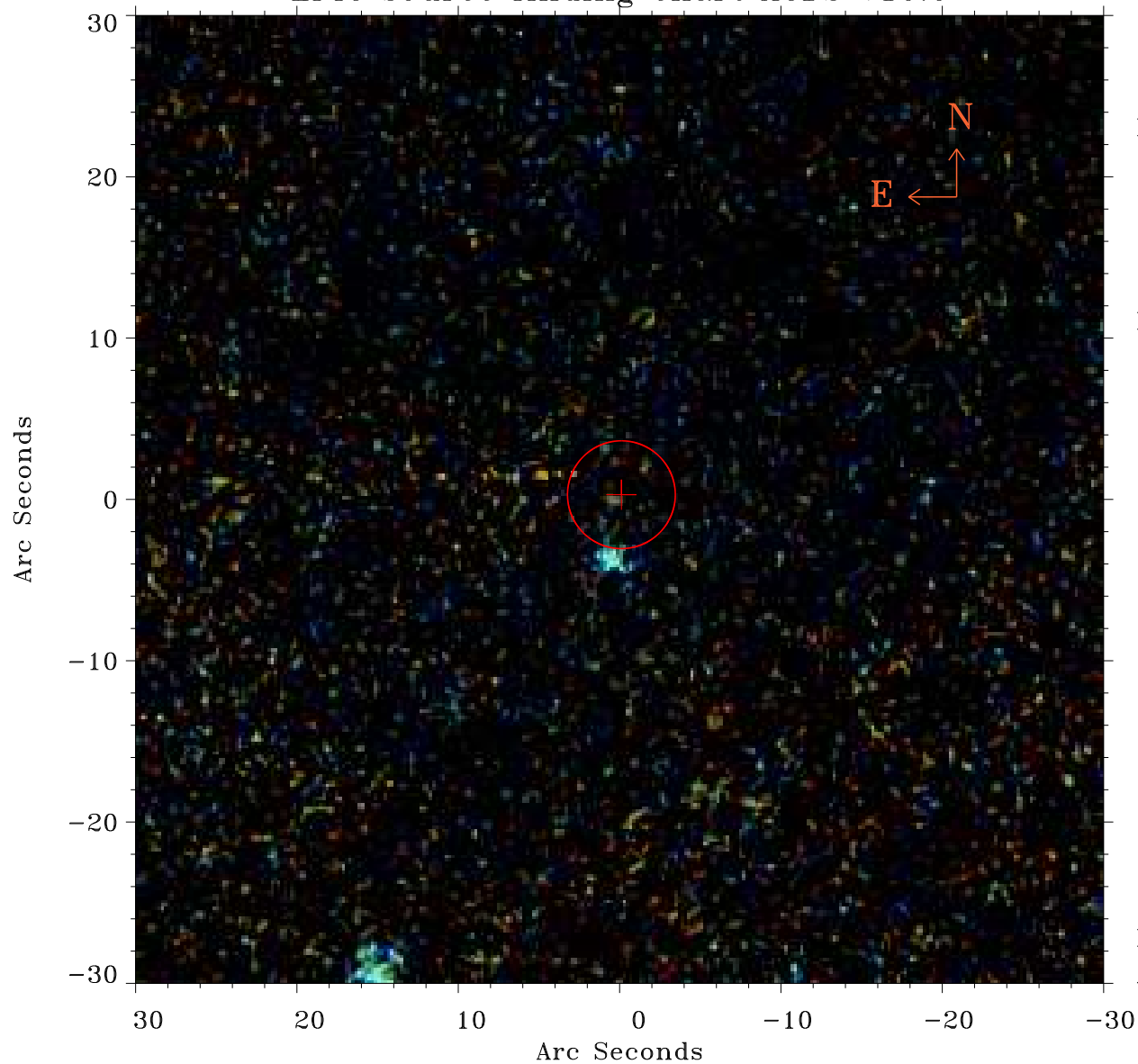


# EPIC source finding chart ACDS V10.0



Principal Investigator :

Dr Michael Watson

XMM target name :

NGC 4395

OBS ID : 112522701

Source number : 60

X-ray coordinates :

$\alpha$  : 12 26 31.82

$\delta$  : +33 33 59.8

Center coordinates :

$\alpha$  : 12 26 31.81

$\delta$  : +33 33 59.7

Plate reference :

Origin : PanSTARRS-DR1

Color coding :

z band ●

(z+g)/2 ●

g band ●

Error:

R90 : 3.3 arsec

XMM SSC

Apr 20 21:26:06 2019