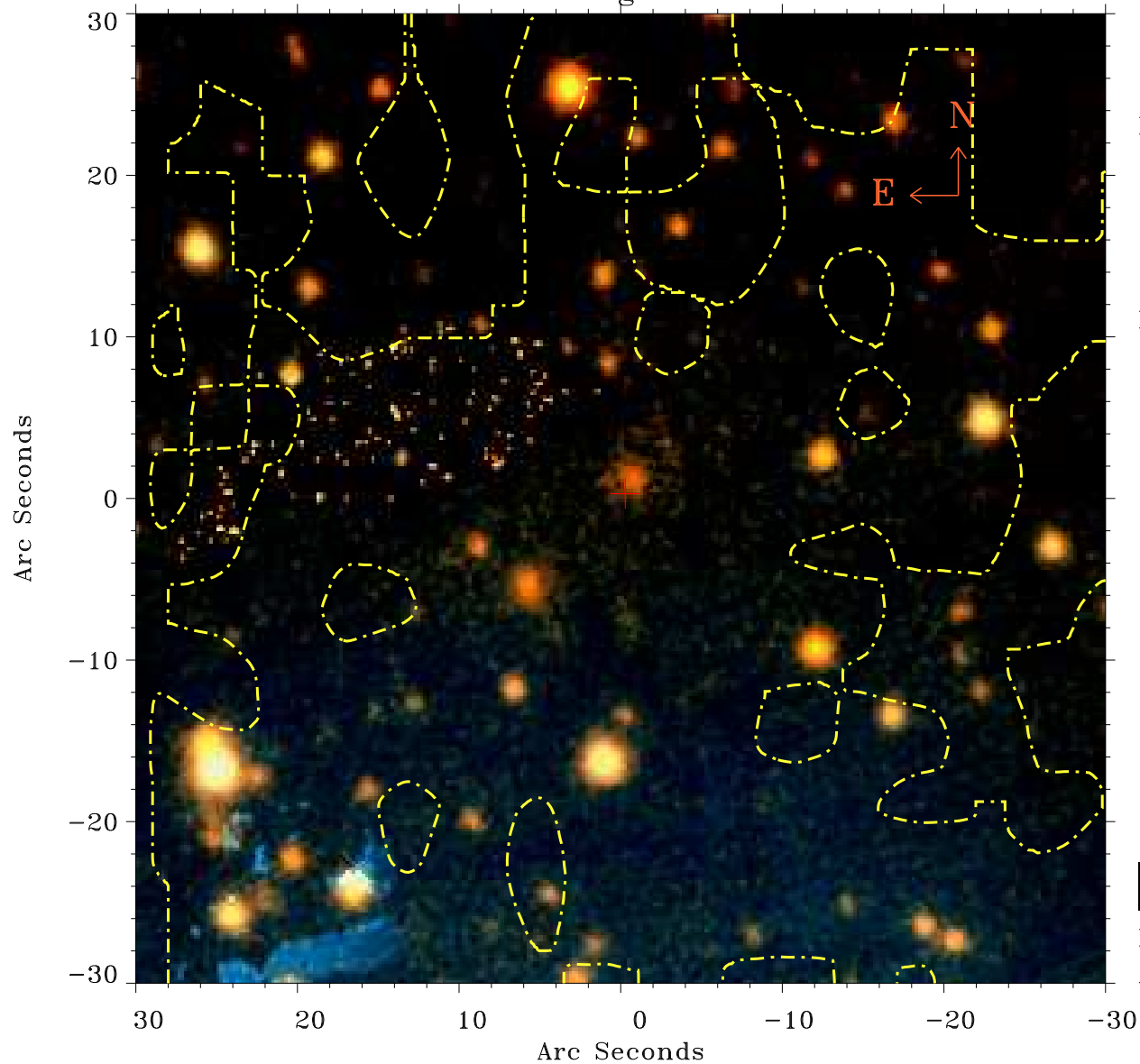


EPIC source finding chart ACDS V10.0



Principal Investigator :

Dr Albert Brinkman

XMM target name :

Tau Scorpii

OBS ID : 112540101

Source number : 7

X-ray coordinates :

α : 16 35 52.25

δ : -28 10 25.2

Center coordinates :

α : 16 35 52.26

δ : -28 10 25.3

Plate reference :

Origin : PanSTARRS-DR1

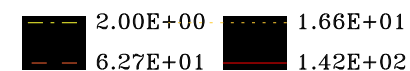
Color coding :

z band ●

(z+g)/2 ●

g band ●

Contour levels (counts) :



XMM SSC

Apr 18 05:37:56 2019