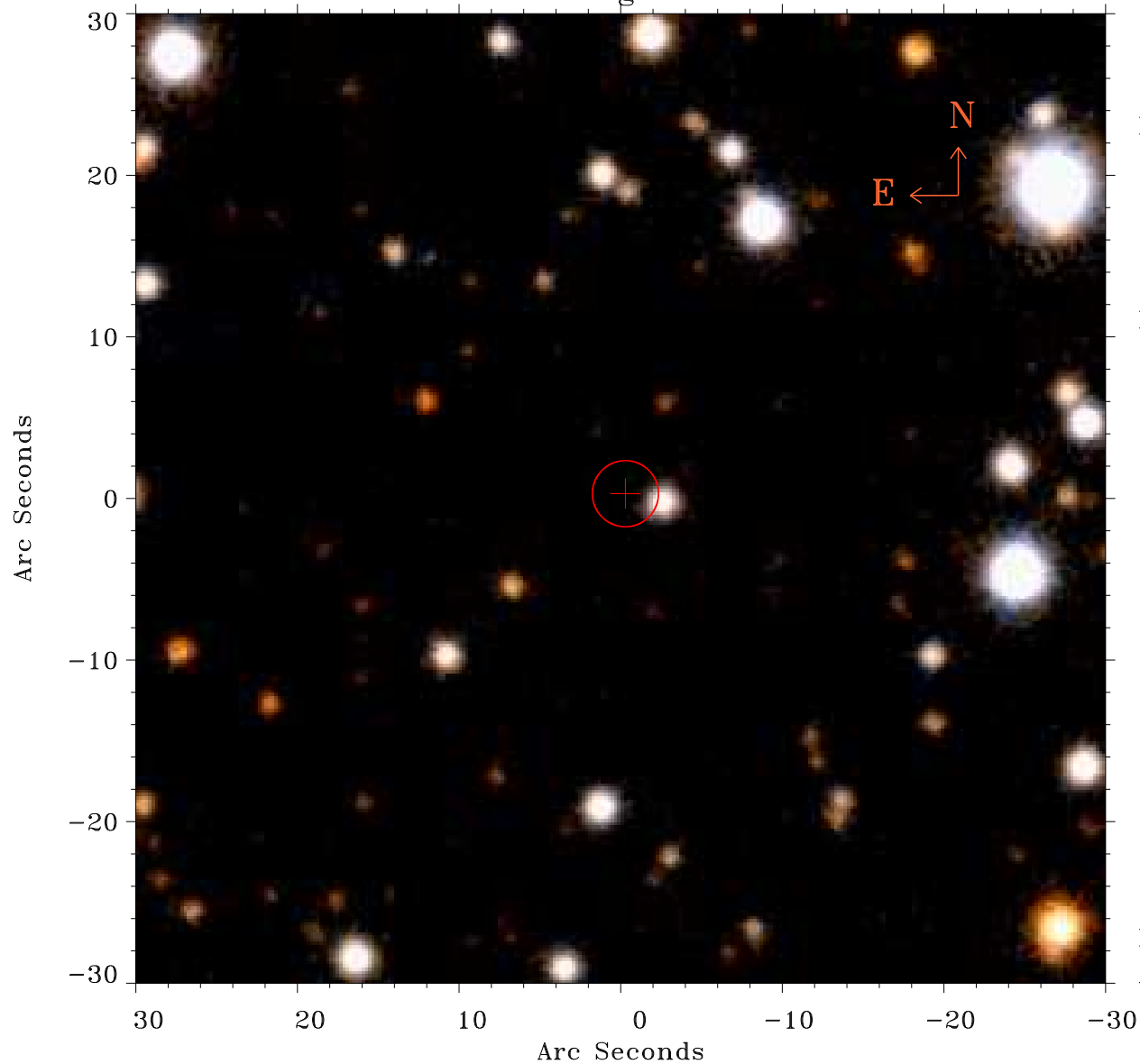


# EPIC source finding chart ACDS V10.0



Principal Investigator :

Dr Albert Brinkman

XMM target name :

Tau Scorpii

OBS ID : 112540101

Source number : 34

X-ray coordinates :

$\alpha$  : 16 36 08.33

$\delta$  : -28 19 32.3

Center coordinates :

$\alpha$  : 16 36 08.33

$\delta$  : -28 19 32.4

Plate reference :

Origin : PanSTARRS-DR1

Color coding :

z band ●

(z+g)/2 ●

g band ●

Error:

R90 : 2.0 arsec

XMM SSC

Apr 18 05:39:12 2019