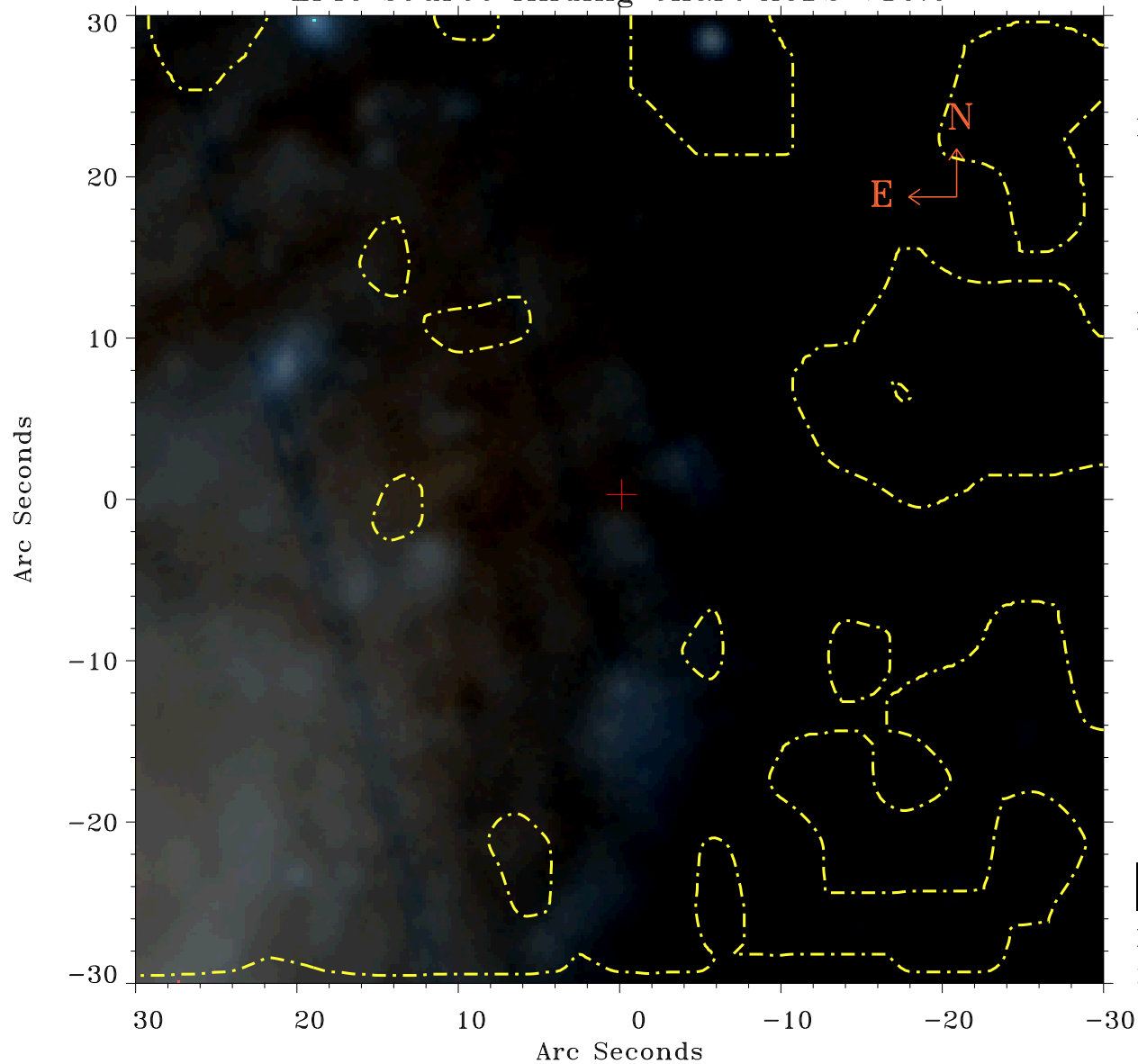


EPIC source finding chart ACDS V10.0



Principal Investigator :

Dr Martin Turner

XMM target name :

ngc4501

OBS ID : 112550801

Source number : 16

X-ray coordinates :

α : 12 31 55.90

δ : +14 25 45.0

Center coordinates :

α : 12 31 55.90

δ : +14 25 44.9

Plate reference :

Origin : PanSTARRS-DR1

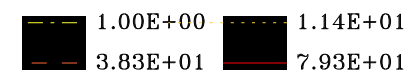
Color coding :

z band ●

(z+g)/2 ●

g band ●

Contour levels (counts) :



XMM SSC

May 2 12:14:58 2019