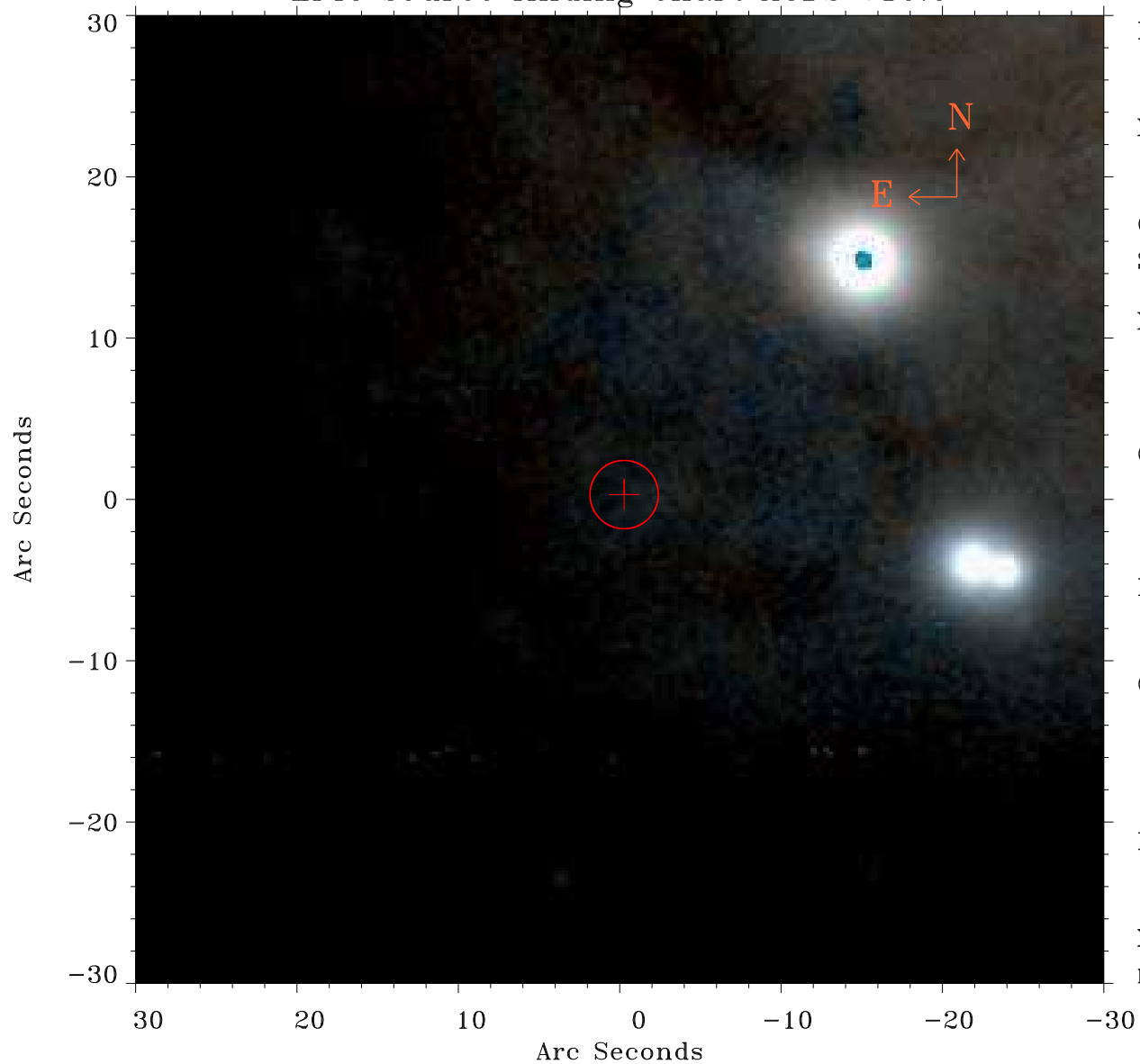


# EPIC source finding chart ACDS V10.0



Principal Investigator :  
Dr Martin Turner

XMM target name :  
ngc4501

OBS ID : 112550801  
Source number : 32

X-ray coordinates :  
 $\alpha$  : 12 32 06.25  
 $\delta$  : +14 23 20.1

Center coordinates :  
 $\alpha$  : 12 32 06.26  
 $\delta$  : +14 23 20.0

Plate reference :  
Origin : PanSTARRS-DR1

Color coding :  
z band ●  
(z+g)/2 ●  
g band ●

Error:  
R90 : 2.1 arsec

XMM SSC  
May 2 12:16:01 2019