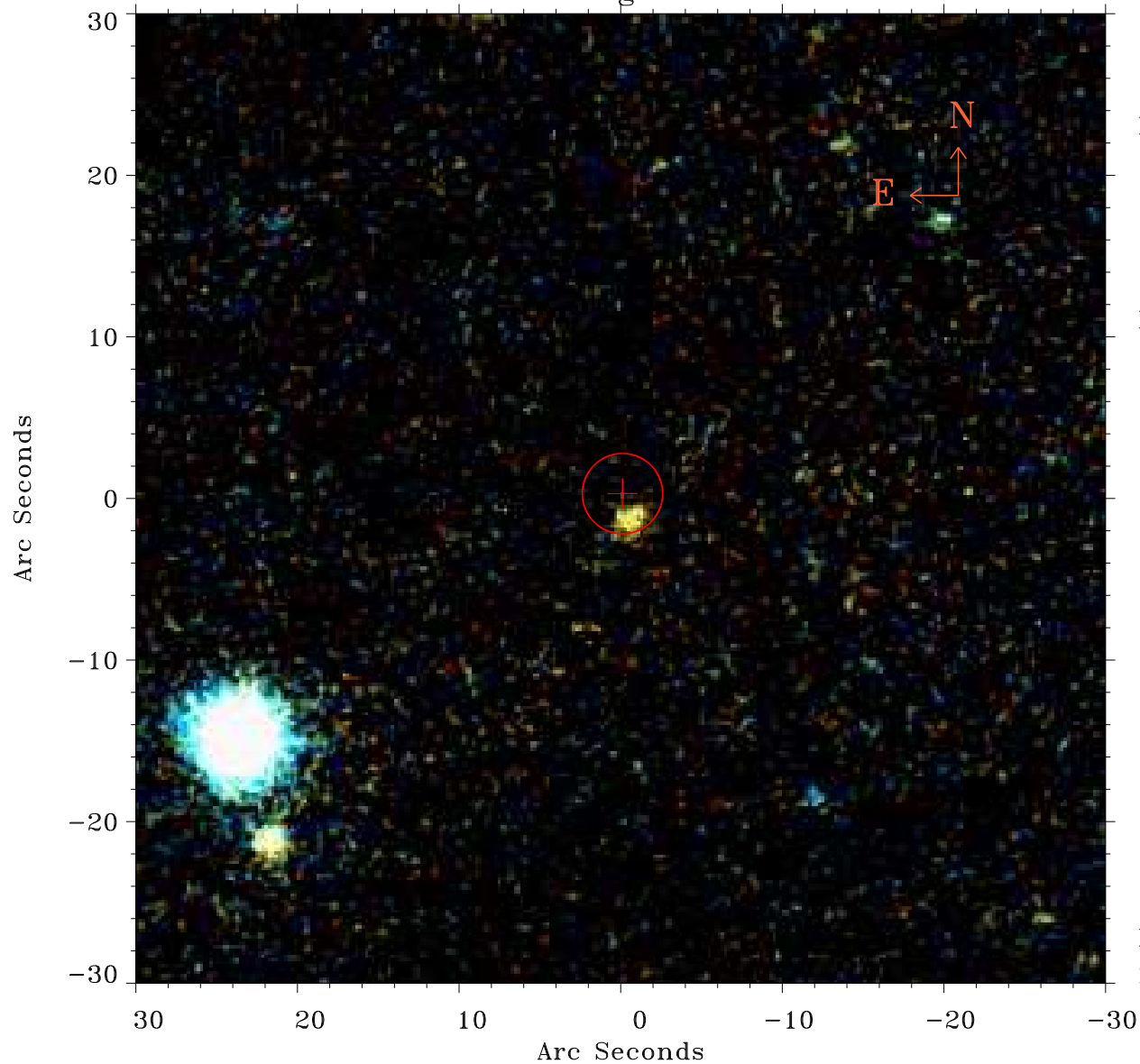


# EPIC source finding chart ACDS V10.0



Principal Investigator :

Dr Martin Turner

XMM target name :

ngc4501

OBS ID : 112550801

Source number : 57

X-ray coordinates :

$\alpha$  : 12 31 32.15

$\delta$  : +14 22 24.5

Center coordinates :

$\alpha$  : 12 31 32.15

$\delta$  : +14 22 24.4

Plate reference :

Origin : PanSTARRS-DR1

Color coding :

z band ●

(z+g)/2 ●

g band ●

Error:

R90 : 2.5 arcsec

XMM SSC

May 2 12:13:12 2019